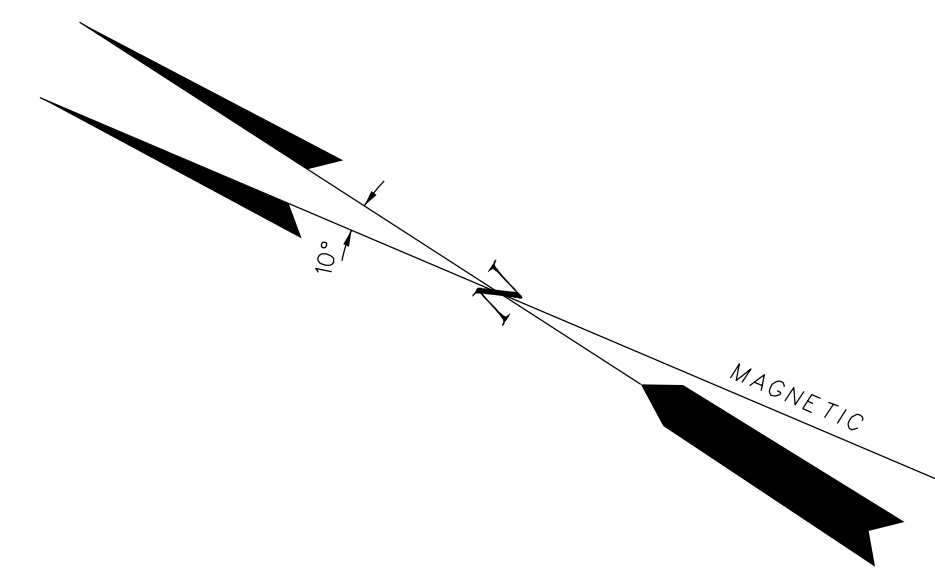


TAX MAP EDGEWATER PARK TOWNSHIP

BURLINGTON COUNTY, NEW JERSEY
SCALE: 1"=60' DATE: FEB., 1960
B. HAROLD WILLS, P.E. & L.S.
LIC. NO 178
MT. HOLLY, NEW JERSEY

NOTE:
THIS SHEET IS A DIGITIZED COPY OF THE TAX MAP ORIGINALLY PREPARED
BY (SURVEYOR'S NAME AND DATE). THE ORIGINAL APPROVED MAP IS ON
FILE IN THE OFFICE OF THE TOWNSHIP ENGINEER.

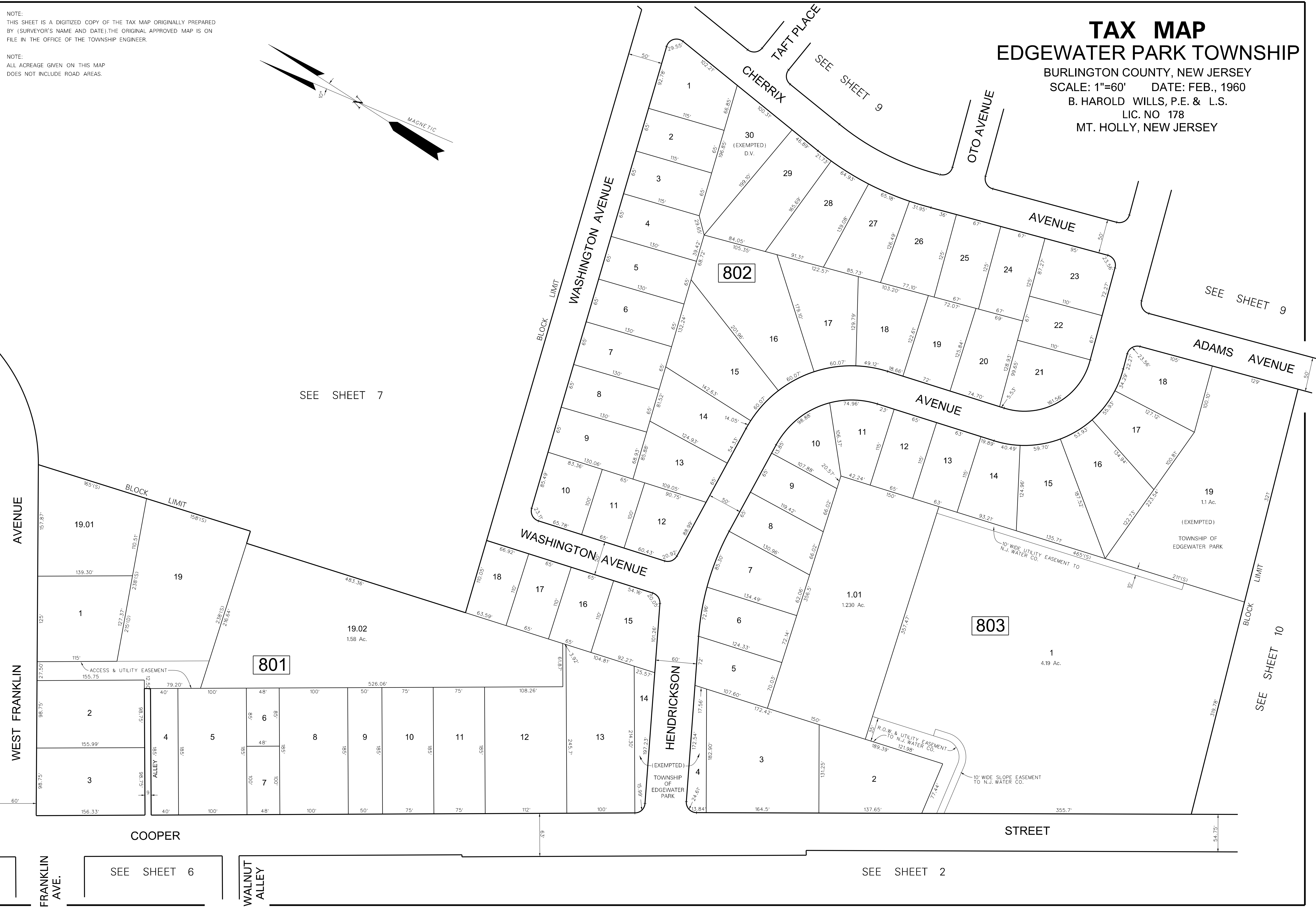
NOTE:
ALL ACREAGE GIVEN ON THIS MAP
DOES NOT INCLUDE ROAD AREAS.



REVISIONS	DATE	REVISOR
ENVIRONMENTAL RESOLUTIONS, INC.	10/03/08	DIGITIZED TAX MAP
RICHARD A. ALAMO, ASSOC.	06/01/84	UPDATED PER N.J. DIVISION OF TAXATION
WM. G. MAJOR, ASSOC.	12/03/75	GENERAL REVISIONS

SEE SHEET 7

SEE SHEET 6



SEE SHEET 9

SEE SHEET 10

SEE SHEET 2