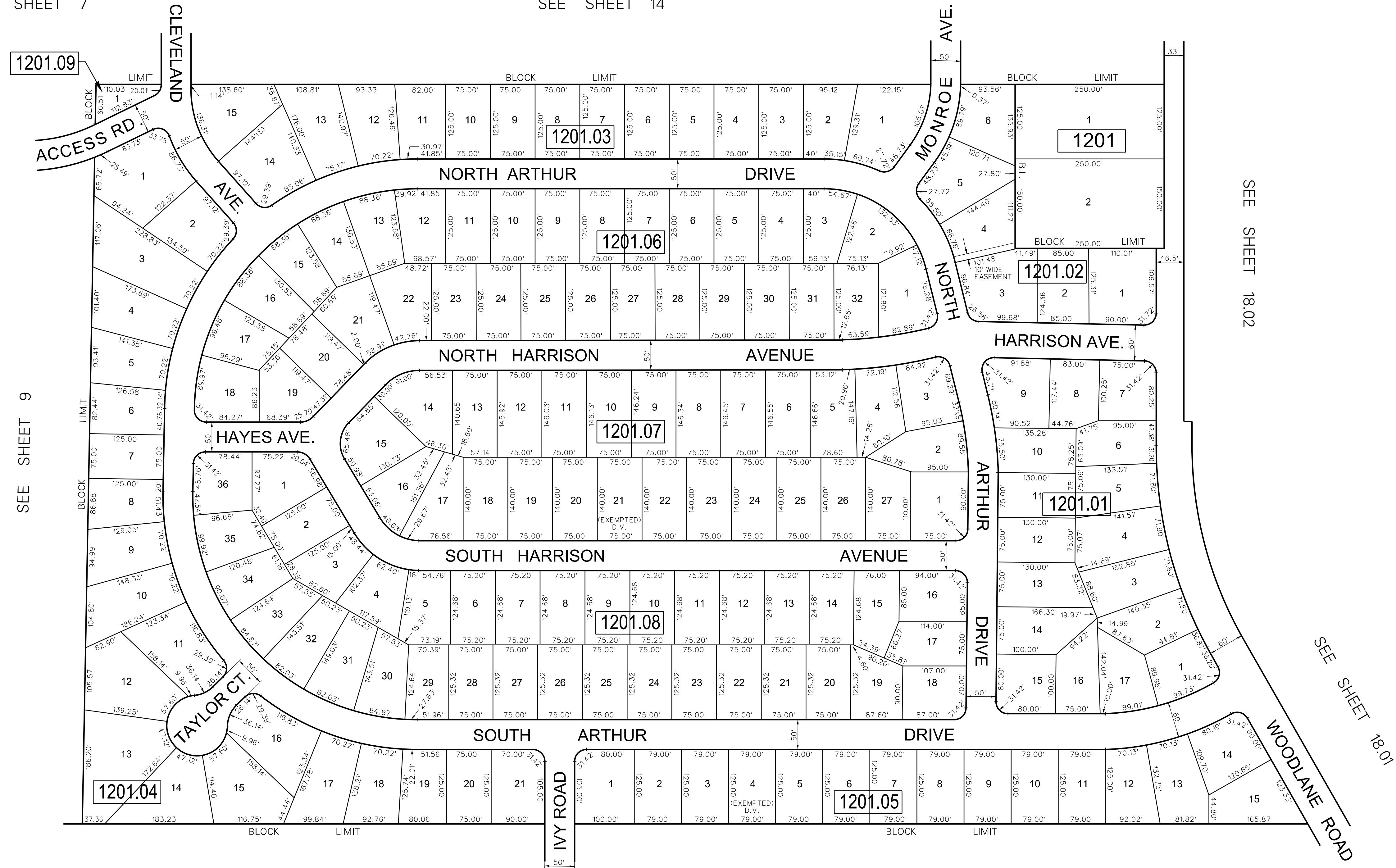


SEE SHEET 7

SEE SHEET 14

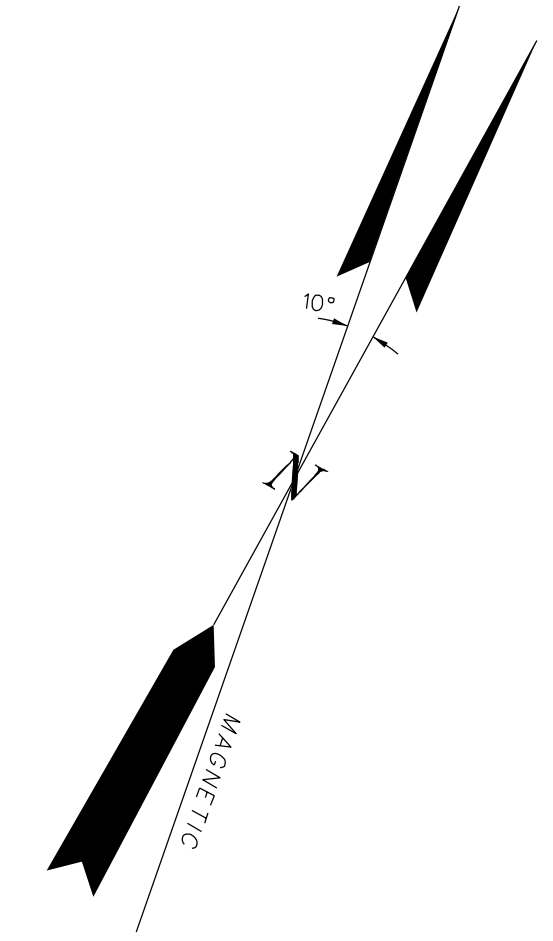


SEE SHEET 9

SEE SHEET 18.02

SEE SHEET 18.01

SEE SHEET 13



TAX MAP
EDGEWATER PARK
TOWNSHIP

BURLINGTON COUNTY, NEW JERSEY
 SCALE: 1"=100' DATE: JAN., 1962
 M. PAUL AUSTIN, P.E. & L.S.
 LIC. NO 3821
 BURLINGTON, NEW JERSEY

NOTE:
 ALL ACREAGE GIVEN ON THIS MAP
 DOES NOT INCLUDE ROAD AREAS.

NOTE:
 THIS SHEET IS A DIGITIZED COPY OF THE TAX MAP ORIGINALLY PREPARED
 BY M. PAUL AUSTIN JAN., 1962. THE ORIGINAL APPROVED MAP IS ON
 FILE IN THE OFFICE OF THE TOWNSHIP ENGINEER.

REVISIONS	DATE	REVISOR
DIGITIZED TAX MAP	10/03/08	ENVIRONMENTAL RESOLUTIONS, INC.
UPDATED PER N.J. DIVISION OF TAXATION	10/31/84	RICHARD A. ALAMO, ASSOC.