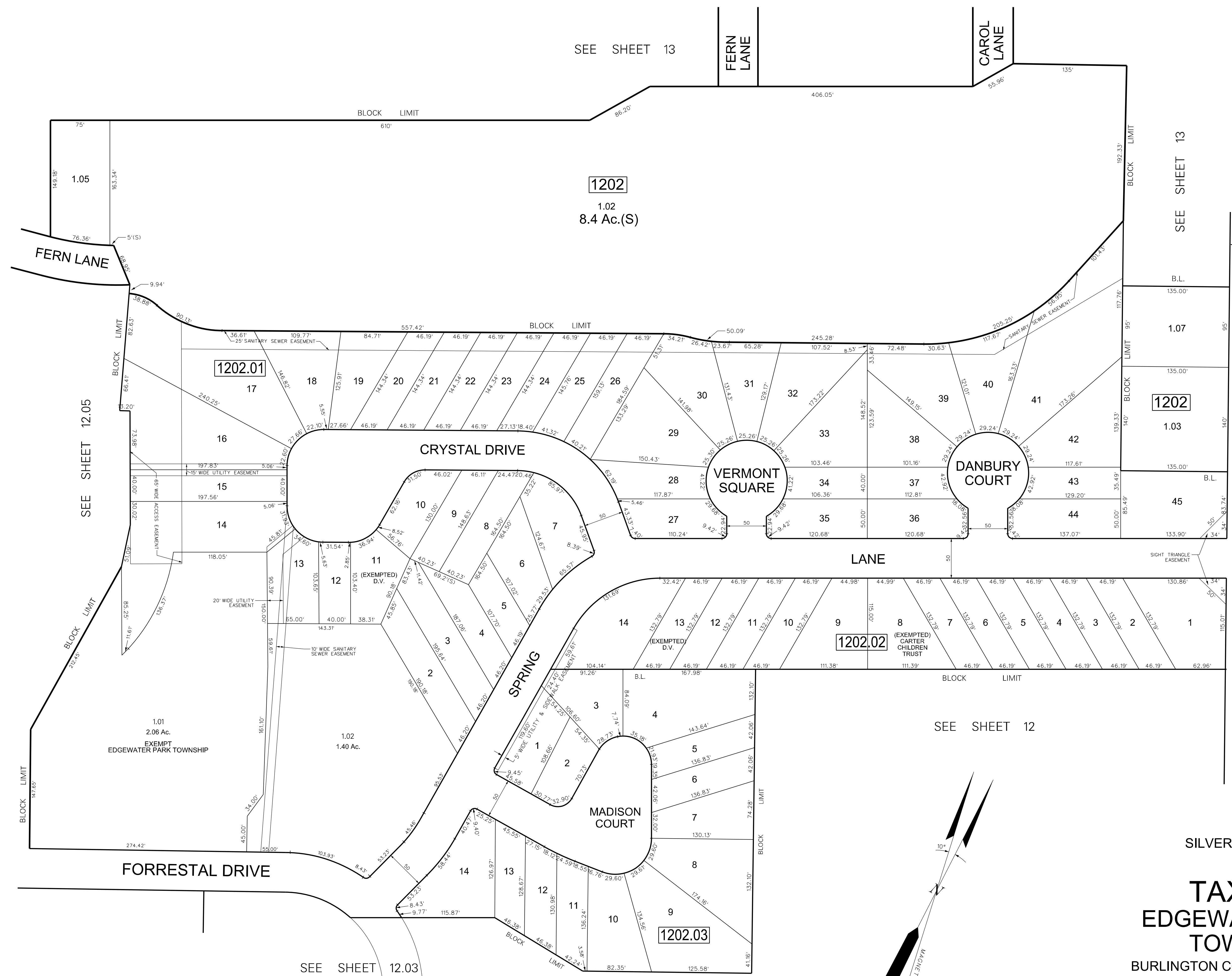


REVISIONS		
DATE	NAME	NO.
12/07/16	CHARLES L. WALTON, JR.	15800



NOTE:
ALL ACREAGE GIVEN ON THIS MAP
DOES NOT INCLUDE ROAD AREAS.

NOTE:
THIS SHEET IS A DIGITIZED COPY OF THE TAX MAP ORIGINALLY PREPARED
BY T. RONALD GSELL, LS OCT., 1996. THE ORIGINAL APPROVED MAP IS ON
FILE IN THE OFFICE OF THE TOWNSHIP ENGINEER.

SILVERPARK WEST

TAX MAP

EDGEWATER PARK TOWNSHIP

BURLINGTON COUNTY, NEW JERSEY
SCALE: 1"=60' DATE: JUL., 2002
T. RONALD GSELL P.E. & P.L.S.
MOUNT HOLLY, NEW JERSEY