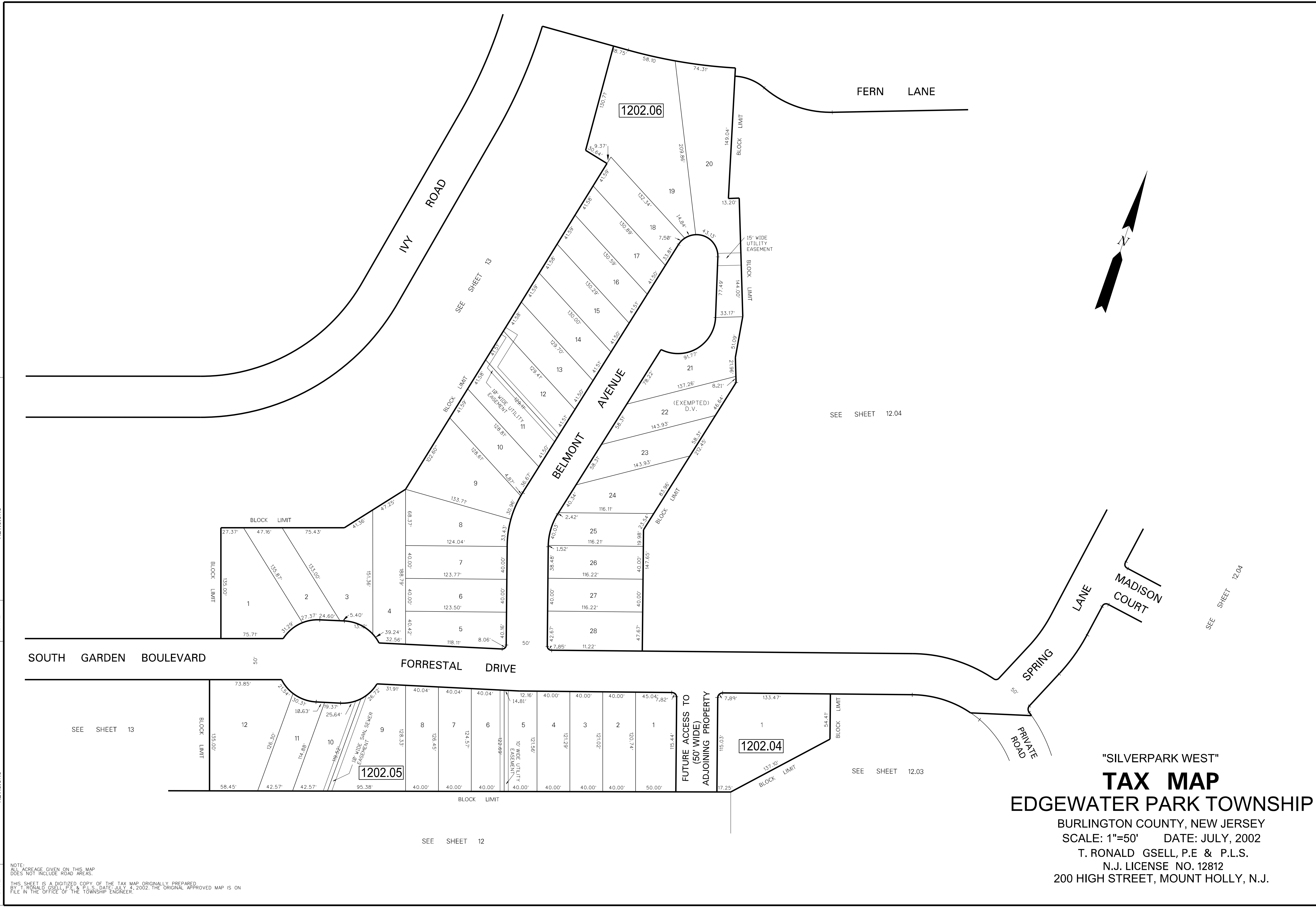


| DATE | REVISIONS | | |
|---------|----------------------------|------|-----------|
| | | DATE | REVISIONS |
| 10-7-08 | DIGITIZED TAX MAP (E.R.L.) | | |



"SILVERPARK WEST"
TAX MAP
 EDGEWATER PARK TOWNSHIP
 BURLINGTON COUNTY, NEW JERSEY
 SCALE: 1"=50' DATE: JULY, 2002
 T. RONALD GSELL, P.E & P.L.S.
 N.J. LICENSE NO. 12812
 200 HIGH STREET, MOUNT HOLLY, N.J.

NOTE: ALL ACRESAGE GIVEN ON THIS MAP DOES NOT INCLUDE ROAD AREAS.
 THIS SHEET IS A DIGITIZED COPY OF THE TAX MAP ORIGINALLY PREPARED BY T. RONALD GSELL, P.E. & P.L.S. DATE: JULY 4, 2002. THE ORIGINAL APPROVED MAP IS ON FILE IN THE OFFICE OF THE TOWNSHIP ENGINEER.