

SEE SHEET 18

SEE SHEET 18.01

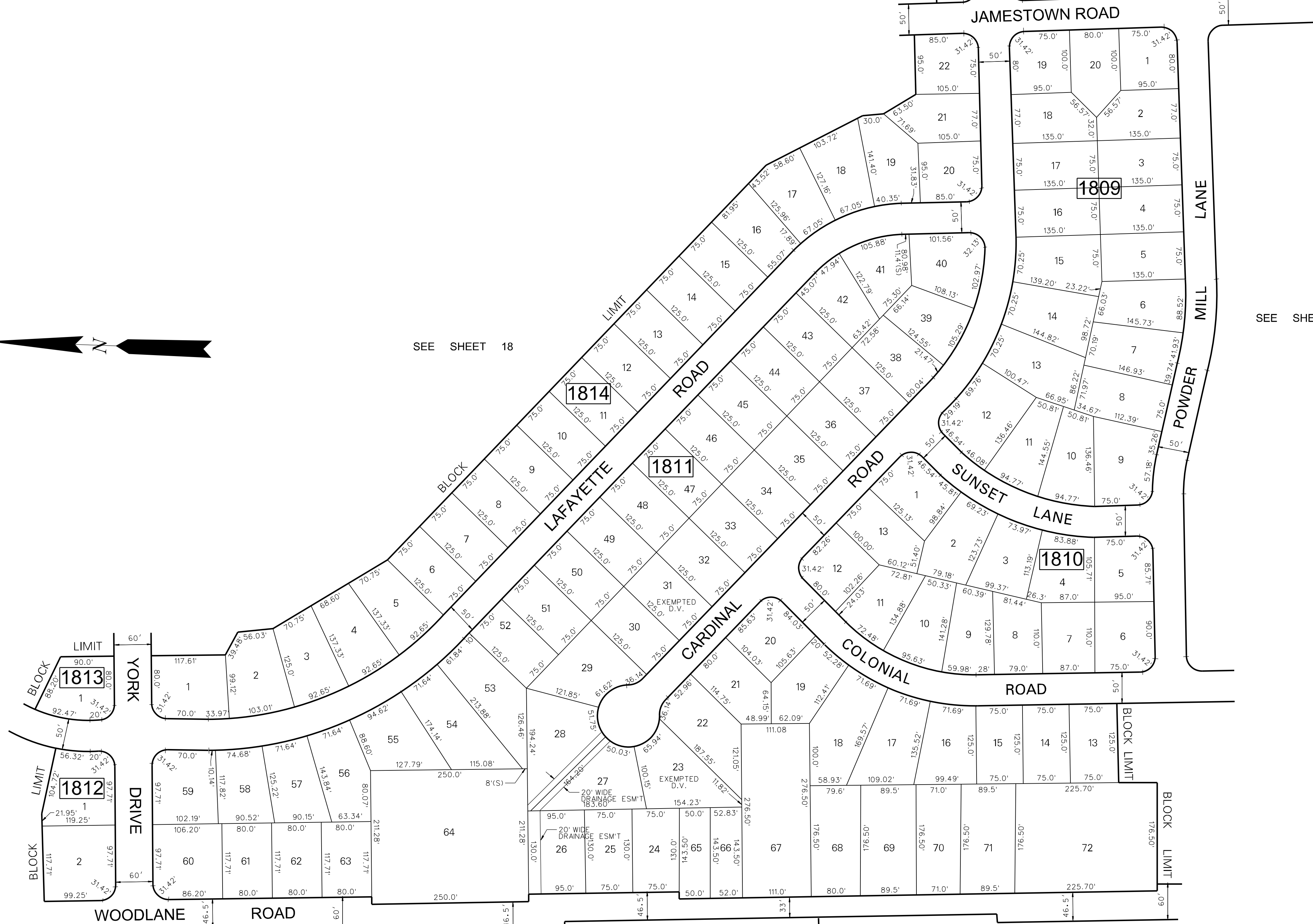
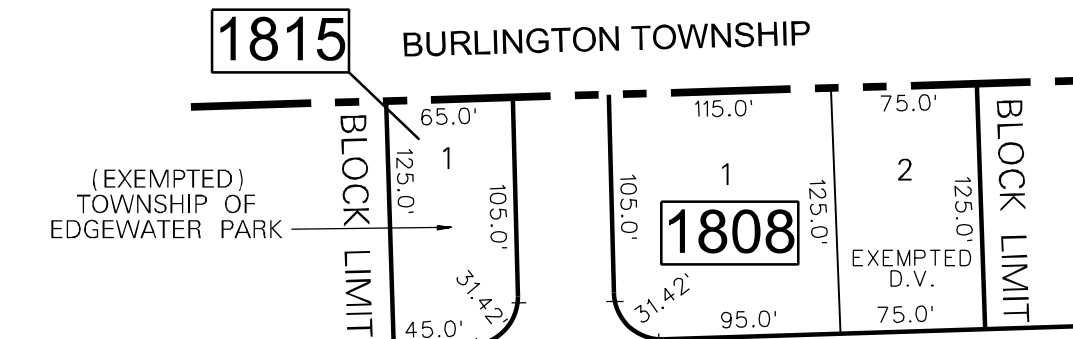
SEE SHEET 18

SEE SHEET 15

SEE SHEET 14

SEE SHEET 12.01

E. FRANKLIN AVE.



SEE SHEET 18.01

TAX MAP
EDGEWATER PARK TOWNSHIP
 BURLINGTON COUNTY, NEW JERSEY
 SCALE: 1"=100' DATE: JUN. 1984
 T. RONALD GSELL, P.E. & P.L.S.
 MT. HOLLY, NEW JERSEY

NOTES:

ALL ACREAGE GIVEN ON THIS MAP DOES NOT INCLUDE ROAD AREAS.

THIS SHEET IS A DIGITIZED COPY OF THE TAX MAP ORIGINALLY PREPARED BY: T. RONALD GSELL. THE ORIGINAL IS ON FILE IN THE OFFICE OF THE TOWNSHIP ENGINEER

DATE	REVISION
9-17-08	DIGITIZED TAX MAP SHEET 18.02