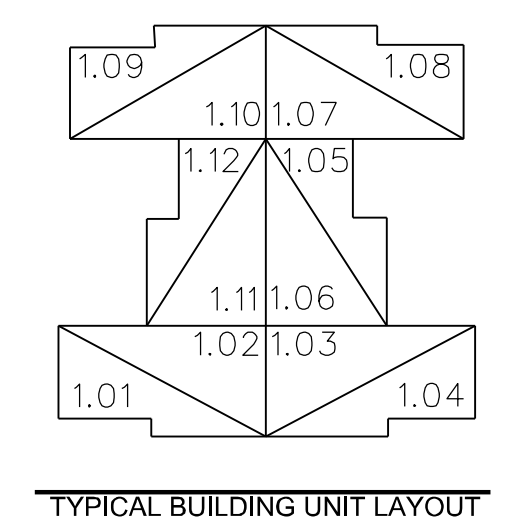
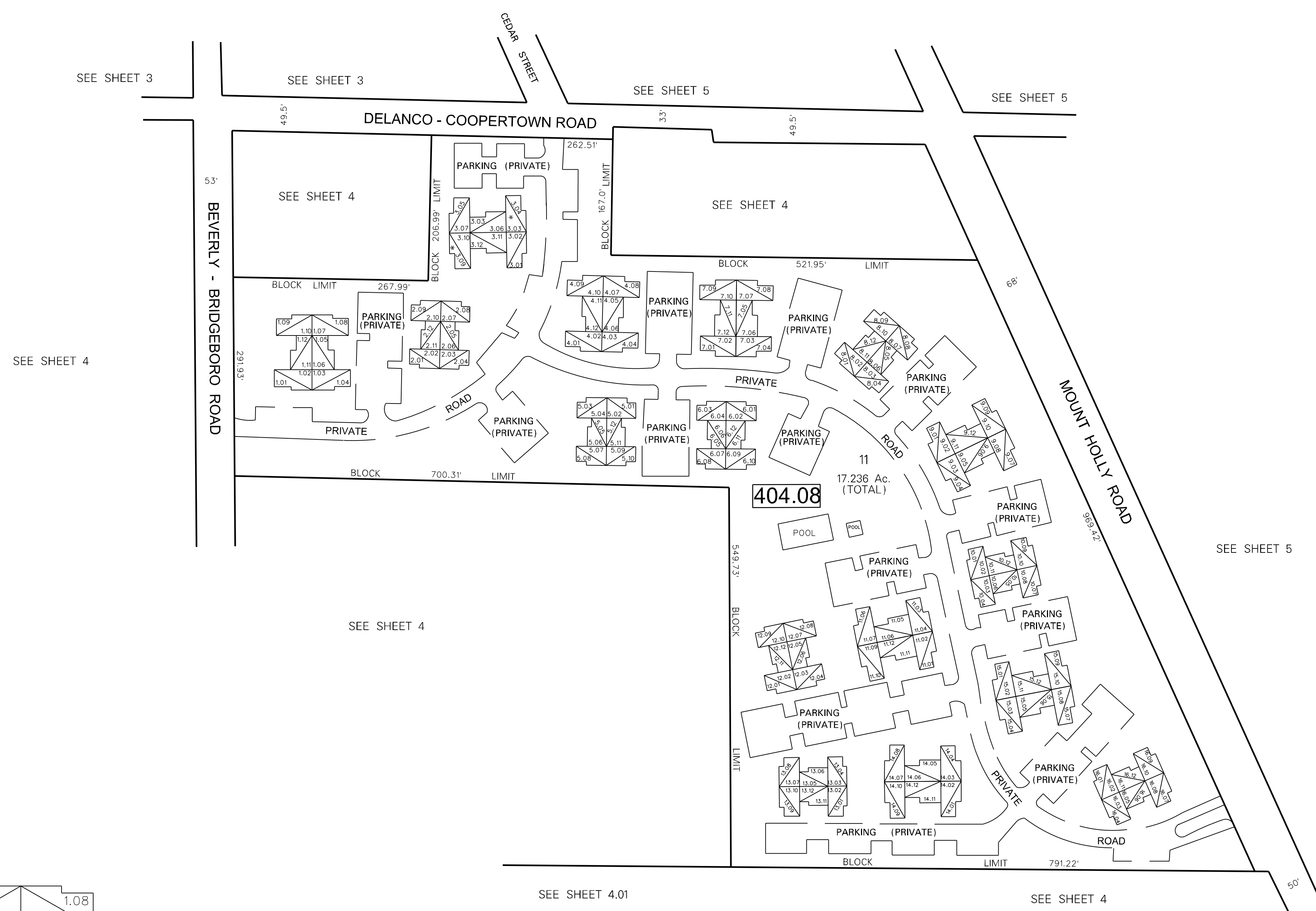
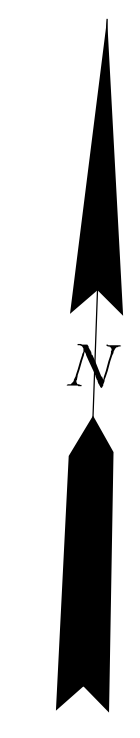


**CONDO DESIGNATIONS**

| PREVIOUS       | CURRENT             |
|----------------|---------------------|
| A1 THROUGH A12 | 1.01 THROUGH 1.12   |
| B1 THROUGH B12 | 2.01 THROUGH 2.12   |
| C1 THROUGH C12 | 3.01 THROUGH 3.12   |
| D1 THROUGH D12 | 4.01 THROUGH 4.12   |
| E1 THROUGH E12 | .01 THROUGH .12     |
| F1 THROUGH F12 | 6.01 THROUGH 6.12   |
| G1 THROUGH G12 | 7.01 THROUGH 7.12   |
| H1 THROUGH H12 | 8.01 THROUGH 8.12   |
| J1 THROUGH J12 | 9.01 THROUGH 9.12   |
| K1 THROUGH K12 | 10.01 THROUGH 10.12 |
| L1 THROUGH L12 | 11.01 THROUGH 11.12 |
| M1 THROUGH M12 | 12.01 THROUGH 12.12 |
| N1 THROUGH N12 | 13.01 THROUGH 13.12 |
| O1 THROUGH O12 | 14.01 THROUGH 14.12 |
| P1 THROUGH P12 | 1 .01 THROUGH 1 .12 |
| R1 THROUGH R12 | 16.01 THROUGH 16.12 |



NOTE:  
 UPPER FLOOR UNIT NUMBERS x.2,x.3,x. .x.8,x.9, & x.12  
 LOWER FLOOR UNIT NUMBERS x.1,x.4,x.6,x.7,x.10 & x.11  
 \* - EXEMPTION "FAMILY SERVICES OF BURLINGTON CO."

| DATE     | REVISIONS                  |
|----------|----------------------------|
| 09-23-08 | DIGITIZED TAX MAP (E.R.L.) |

NOTE:  
 ALL ACRESAGE GIVEN ON THIS MAP DOES NOT INCLUDE ROAD AREAS.  
 THIS SHEET IS A DIGITIZED COPY OF THE TAX MAP ORIGINALLY PREPARED BY T. RONALD GSELL, L.S., DATE: JUNE, 1984. THE ORIGINAL APPROVED MAP IS ON FILE IN THE OFFICE OF THE BOROUGH ENGINEER.

"COOPER VALLEY VILLAGE CONDOMINIUMS"  
**TAX MAP**  
 EDGEWATER PARK TOWNSHIP  
 BURLINGTON COUNTY, NEW JERSEY  
 SCALE: 1"=50' DATE: JUNE, 1984  
 T. RONALD GSELL, L.S.  
 N.J. LICENSE NO. 12812  
 200 HIGH STREET, MOUNT HOLLY, N.J.