

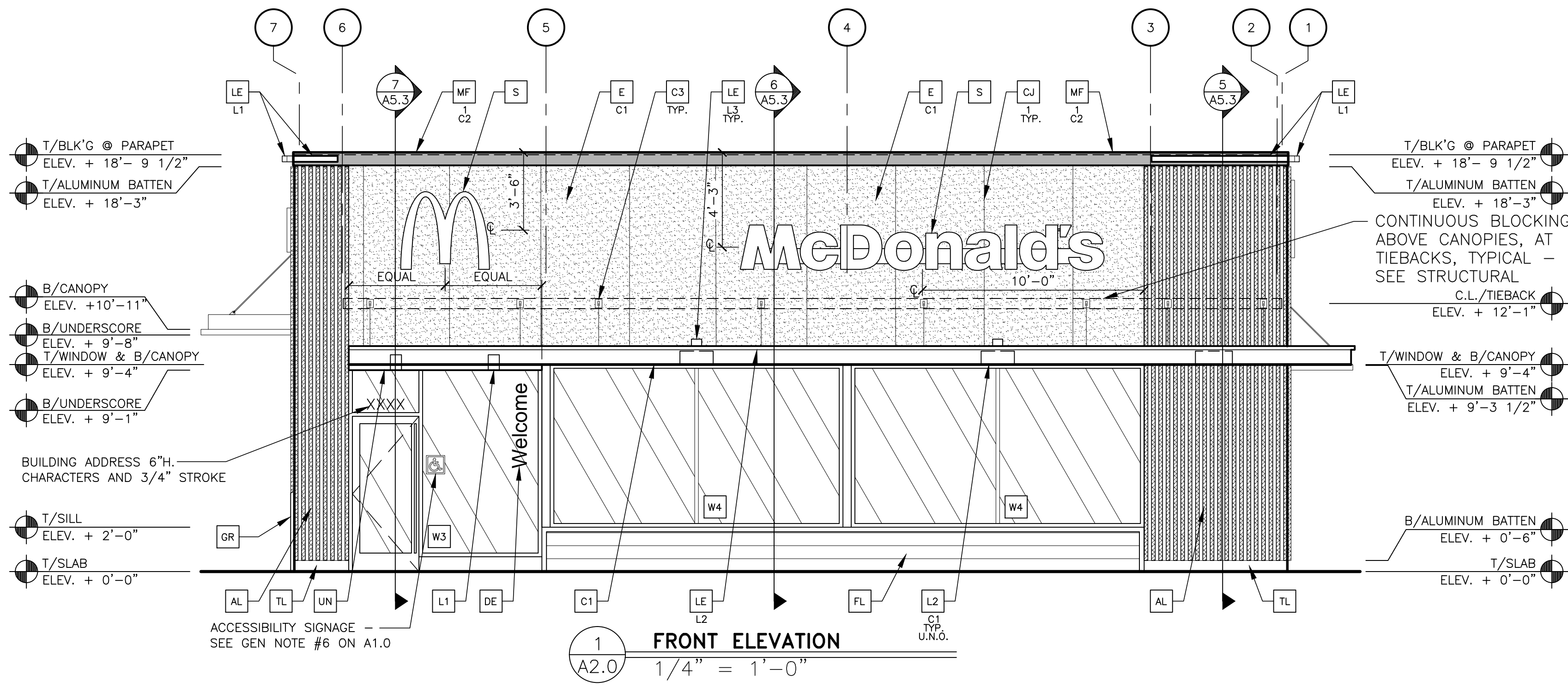
1 FLOOR PLAN
R1.3 1/4" = 1'-0"

4597- WW PLAN

4,309 GROSS SQ. FT. / 4,117 NET SQ. FT.
58 SEATS (4 ACCESSIBLE SEATS)

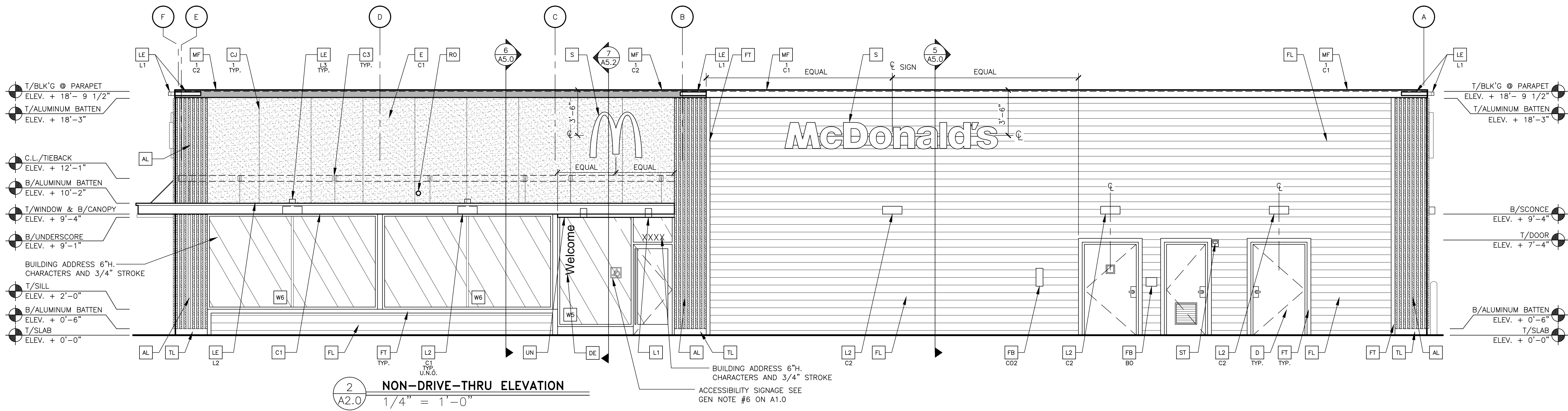
THIS DRAWING IS
FOR REFERENCE ONLY
NOT FOR CONSTRUCTION
SEATING LAYOUT IS SCHEMATIC, THE FINAL
SEATING LAYOUT TO BE PROVIDED BY OTHERS.

SHEET NO. R1.3 SEATING PLAN	TITLE 2020 STANDARD BUILDING - BB20 4597- WOOD/WOOD DESCRIPTION WOOD BEARING WALLS W/FIBER CEMENT SIDING & CI WOOD ROOF TRUSS FRAMING FIBER CEMENT PANELS/BATTEN/TILE/FIBER CEMENT SIDING SITE ID 029-0019 SITE ADDRESS US 130/ COOPER ST EDGEWATER PARK, NJ	DRAWN BY HM STD. ISSUE DATE 2019-9 REVIEWED BY - DATE ISSUED 5/16/2020	PREPARED FOR: McDonald's USA, LLC <small>These drawings and specifications are the confidential and proprietary property of McDonald's USA, LLC and shall not be copied or reproduced without the express written consent of McDonald's USA, LLC. Use of these drawings for reference or example on another project requires the contract documents for reuse on another project is not authorized.</small> PREPARED BY: URS Architects/Engineers - Planners 1255 Broad Street, Suite 201 Clifton, NJ 07013-3988 973.883.8590 fax 973.883.8501 http://www.urscorp.com	DATE: REV DESCRIPTION
--	---	---	--	---



1 FRONT ELEVATION
A2.0 1/4" = 1'-0"

3 NOT USED
A2.0 -



2 NON-DRIVE-THRU ELEVATION
A2.0 1/4" = 1'-0"

BUILDING SIGNAGE SCHEDULE		
FACADE	SIGN ELEMENT	S.F.
FRONT	1 McDonald's "M" ARCH LOGO	14
	2 McDonald's LOGO	32.8
	TOTAL:	46.8
NON-DRIVE THRU SIDE	1 McDonald's "M" ARCH LOGO	14
	2 McDonald's LOGO	32.8
TOTAL:		46.8
DRIVE THRU SIDE	2 McDonald's LOGO	32.8
	TOTAL:	32.8
REAR	1 McDonald's "M" ARCH LOGO	14
	TOTAL:	14
TOTAL BUILDING SIGNAGE		140.4

KEY NOTES:

- AL ALUMINUM BATTEN SYSTEM
MFR: B+N INDUSTRIES
SIZE: 2"x2" PROFILE
COLOR: WOOD GRAIN, BACKRAIL UNFINISHED, ENDCAP PAINTED TO MATCH
SUBSTRATE: 1/2" EXTERIOR HIGH DENSITY OVERLAY (HDO) PLYWOOD, BB, GROUP 1, HDO BOTH FACES, APA TRADEMARKED. COURSE GRIT SAND SURFACES PRIOR TO PRIMING. PRIME AND PAINT BOTH SIDES AND ALL EDGES PRIOR TO INSTALLATION.
SUBSTRATE COLOR: "IRON ORE" SW7069 BY SHERWIN WILLIAMS
- AP ALPOLIC METAL PANEL (COLOR: RAL 7022)
- C1 ALUMINUM CANOPY SYSTEM W/FASCIA
COLOR: WHITE
- C2 ALUMINUM CANOPY SYSTEM
COLOR: RAL 7022
- C3 ALUMINUM CANOPY TIEBACK
GC TO PROVIDE CONTINUOUS BLOCKING ON WALL BEHIND TIEBACKS
- CJ CONTROL JOINT
1-TYPE: 1 = EIFS
- D HOLLOW METAL DOOR
PAINT: SHERWIN WILLIAMS SW-7019 GAUNTLET GRAY
- DE DECAL BY GRAPHICS SUPPLIER
SURFACE APPLIED, FIELD INSTALLED, PRE CUT, PRE SPACED.
SUPPLIERS:
VOMELA (865) 330-7337, ann.bowen@vomela.com
GEX INTERNATIONAL (847) 543-4600,
mcdonaldsdecor@gsi.com
- E EXTERIOR INSULATION FINISH SYSTEM (E.I.F.S.)
C1-COLOR:
C1 = "IRON ORE" SW 7069 BY SHERWIN WILLIAMS
FB FILL BOX
CO2 = CO2 = BULK CO2 FILL BOX (EQPM SCHEDULE ITEM 49.00)
BO = BULK OIL FILL BOX (EQPM SCHEDULE ITEM 700.18)
- FL FIBER CEMENT LAP SIDING; HARDIEPLANK LAP SIDING, BEADED SMOOTH, 8 1/4" WIDTH, 7" EXPOSURE, HZS, COLOR: STEEL - AGED PEWTER (ACM TO CONFIRM)
- FT FIBER CEMENT TRIM: HARDIETRIM BOARDS, 4/4 SMOOTH, 1 5/8" & 3 1/2" WIDTH, 3/4" THICK, HZS, COLOR: STEEL - AGED PEWTER (CHECK 1 5/8" PRE-PAINT AVAILABILITY)
- GR GUARD RAIL -SEE SITE PLAN FOR EXACT LOCATION AND LENGTHSEE 4/A2.1 FOR DETAILS
PAINT: "IRON ORE" SW 7069 BY SHERWIN WILLIAMS
- L1 RECESSED DOWN LIGHT FIXTURE - SEE ELECTRICAL
COLOR: GOLD
- L2 RADIAL SCENCE LIGHT FIXTURE - SEE ELECTRICAL
C1-COLOR:
C1 = WHITE
C2 = PLATINUM SILVER
- LE ACCENT LIGHTING - SEE ELECTRICAL
L1-LED LIGHT:
L1 = SLIM LED (DOWN ONLY)
L2 = INTEGRAL CANOPY FIXTURE
L3 = UP ONLY FLOOD FIXTURE
- PB PIPE BOLLARD - PAINTED YELLOW
- PT (RMHC) COIN COLLECTOR
UNIT: APERTURE WPT, #DTA2013
CALL 1-877-766-7642 TO ORDER
- MF METAL FASCIA
1-TYPE:
1 = PRE-FAB ANCHOR-TITE FASCIA
2 = BOTTOM TRIM AT METAL REVEAL PANEL
3 = VERTICAL TRIM AT METAL REVEAL PANEL CORNERS, CLOSURES
COLOR:
C1 = CITYSCAPE
C2 = RAL 7022
- RO ROOF DRAIN OVERFLOW PIPE PAINT TO MATCH SURROUNDING MATERIAL
- S McDONALD'S SIGNAGE BY OTHERS - UNDER SEPARATE PERMIT.
C1-COLOR:
C1 = WEATHERED ZINC RACEWAY
C2 = RAL 7022 RACEWAY
- ST CO2 STROBE/ALARM. SEE MECHANICAL DRAWINGS FOR SPECIFICATION.
- TL TILE (BASE OF BATTEN SYSTEM)
IRIS CERAMICA: E-WOOD COLLECTION
COLOR: R9 BLACK, SIZE: 6"x24"
WATERPROOFING SETTING MATERIAL AND GROUT: BY MAPEI
GROUT COLOR: ULTRA COLOR PLUS - 47 CHARCOAL
GROUT WIDTH: 1/8" TO 3/16"
CONTACT: JAN DETER, (714) 937-7500
- UN METAL UNDERSCORE
COLOR: GOLD
- W1 EXTERIOR WINDOW ASSEMBLY - TEMPERED GLASS
COLOR: EXTRA DARK BRONZE - SEE ASSEMBLY NOTES ON 4/A5.0 & FRAME TYPES ON SHEET A6.0
- W2 DRIVE-THRU WINDOW BY READY ACCESS
MODEL: 600 SERIES, 36" SERVICE HEIGHT WITH TRANSOM, MANUAL OPEN; ELECTRONIC RELEASE
COLOR: DEEP BRONZE
SLIDE DIRECTION: RL = RIGHT TO LEFT
LR = LEFT TO RIGHT

PREPARED BY: URS Architects/Engineers, Inc. architects - engineers - planners 1265 Broad Street, Suite 201 Clifton, NJ 07013-3968 9/3.883.8590 fax 973.883.8501 http://www.urscorp.com

McDonald's USA, LLC

2020 STANDARD BUILDING - BB20
4597 - WOOD/WOOD

DESCRIPTION: WOOD BEARING WALLS W/FIBER CEMENT SIDING & C1 WOOD ROOF TRUSS FRAMING FIBER CEMENT PANELS/BATTEN/TILE/FIBER CEMENT SIDING

DATE ISSUED: 6/16/2020

029-0019

A2.0 ELEVATIONS

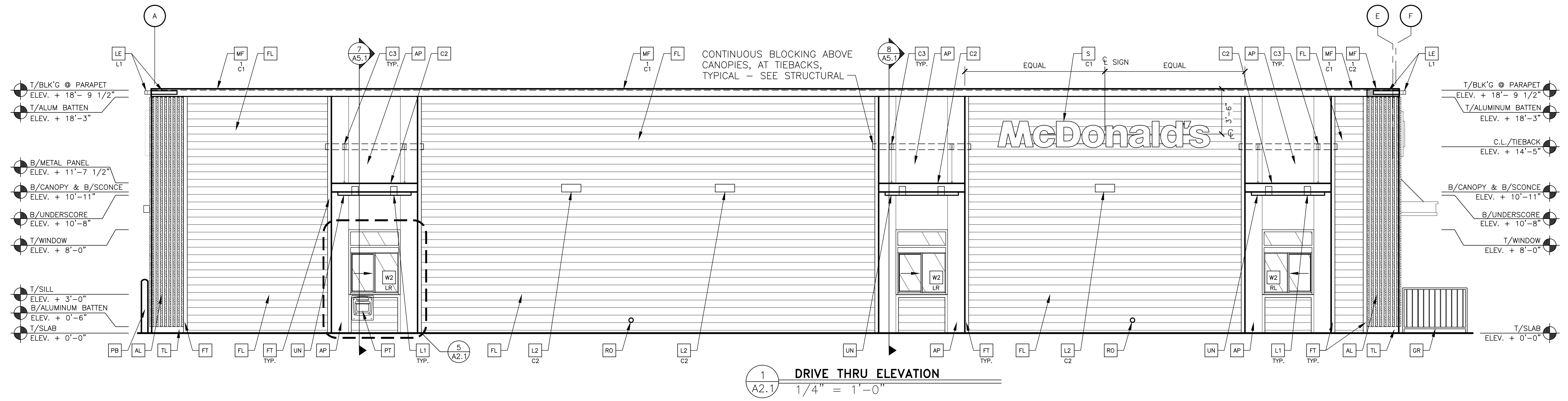
EDGEWATER PARK, NJ

029-0019

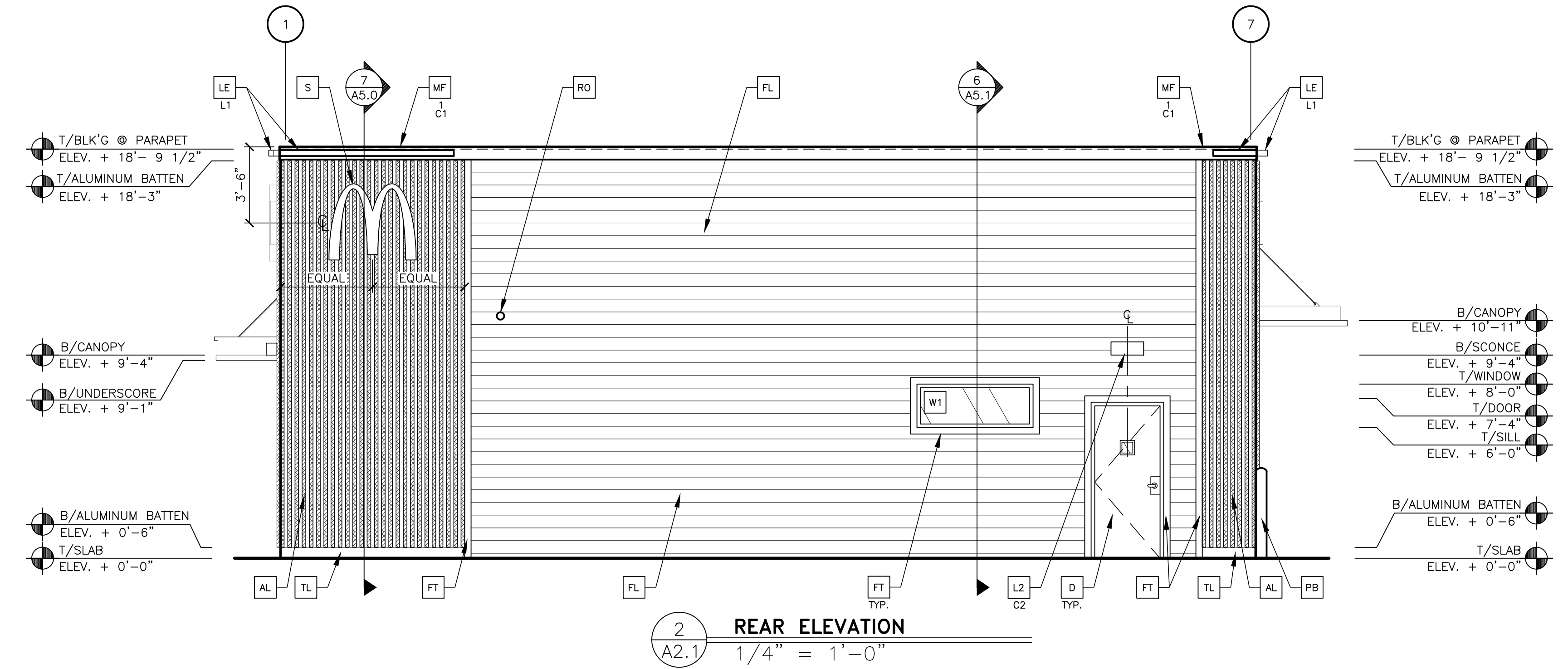
DESCRIPTION

REV DATE

BY

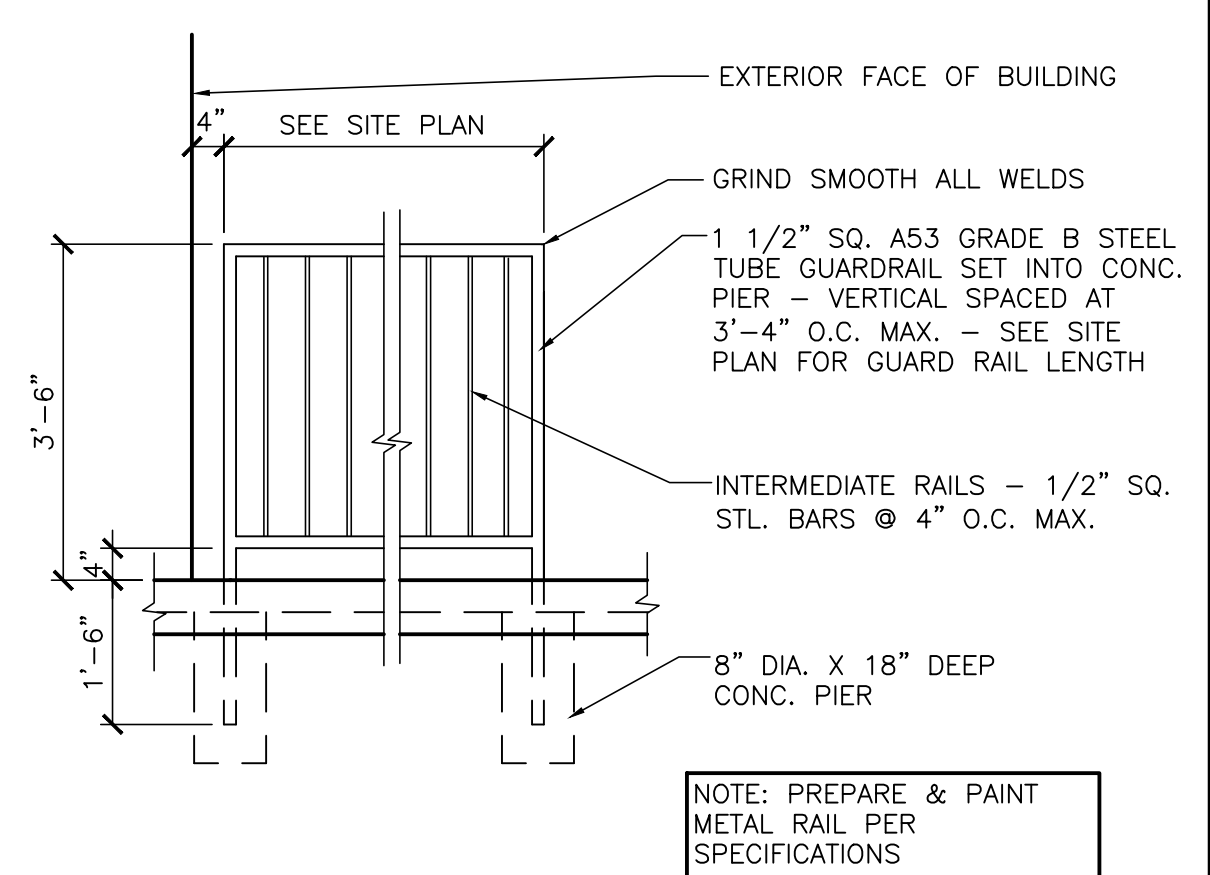


1 DRIVE THRU ELEVATION
A2.1 1/4" = 1'-0"

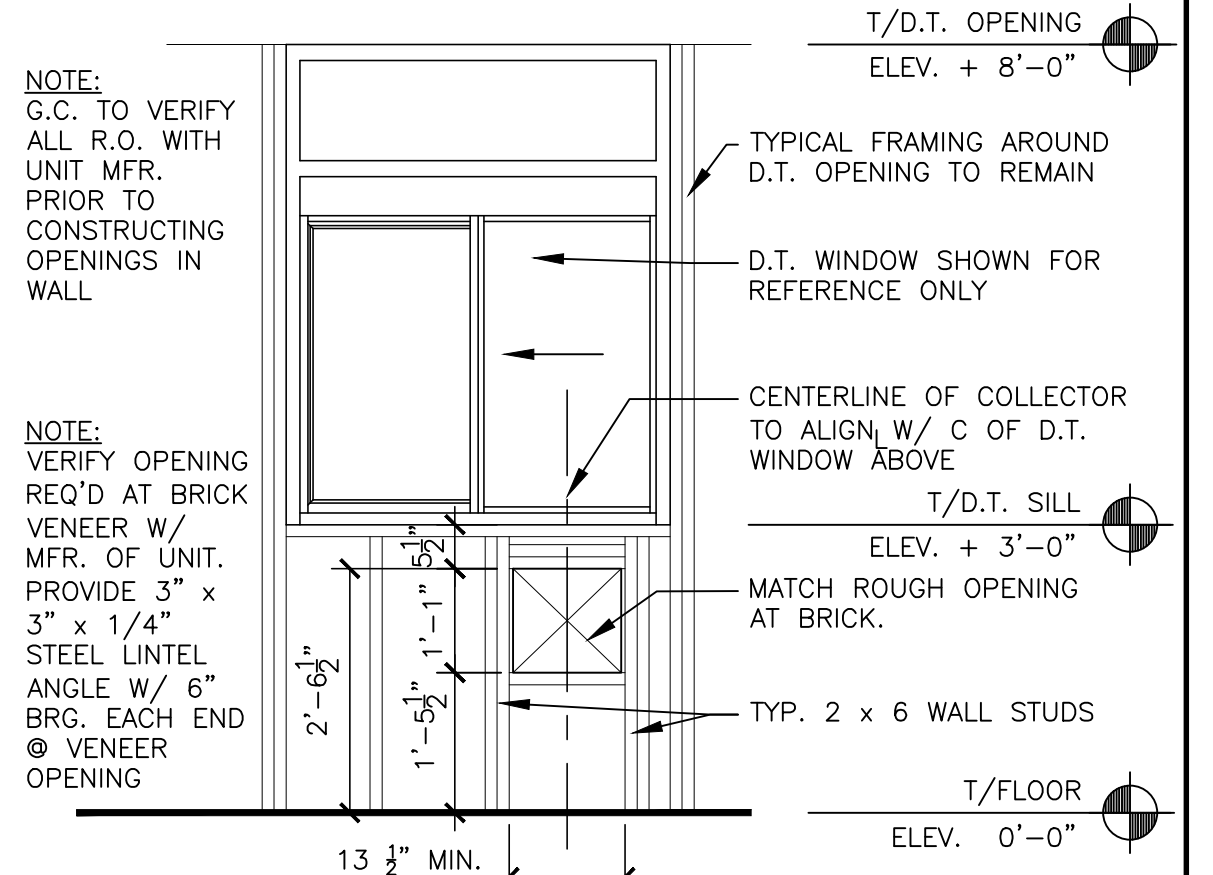


2 REAR ELEVATION
A2.1 1/4" = 1'-0"

3 NOT USED
A2.1 -



4 GUARD RAIL DETAIL
A2.1 1/2" = 1'-0"



5 (RMHC) COIN COLLECTOR @ FRAMED WALL
A2.1 1/2" = 1'-0"

6 DETAIL NOT USED
A2.1 -

- KEY NOTES:**
- AL ALUMINUM BATTEN SYSTEM
MFR: B-H INDUSTRIES
COLOR: WOOD GRAIN, BACKRAIL UNFINISHED, ENDCAP PAINTED TO MATCH
SUBSTRATE: 1/2" EXTERIOR HIGH DENSITY OVERLAY (HDO) PLYWOOD, BB, GROUP 1, HDO BOTH FACES, APA TRADEMARKED COURSE GRIT SAND SURFACES PRIOR TO PRIMING, PRIME AND PAINT BOTH SIDES AND ALL EDGES PRIOR TO INSTALLATION.
SUBSTRATE COLOR: "IRON ORE" SW7069 BY SHERWIN WILLIAMS
 - AP ALPOLIC METAL PANEL (COLOR: RAL 7022)
 - C1 ALUMINUM CANOPY SYSTEM W/FASCIA
COLOR: WHITE
 - C2 ALUMINUM CANOPY SYSTEM
COLOR: RAL 7022
 - C3 ALUMINUM CANOPY TIEBACK
GC TO PROVIDE CONTINUOUS BLOCKING ON WALL BEHIND TIEBACKS
 - CJ CONTROL JOINT
1-TYPE: 1 = EIFS
 - D HOLLOW METAL DOOR
PAINT: SHERWIN WILLIAMS SW-7019 GAUNTLET GRAY
 - DE DECAL BY GRAPHICS SUPPLIER
SURFACE APPLIED, FIELD INSTALLED, PRE CUT, PRE SPACED.
SUPPLIERS:
VOMELA (865) 330-7337, ann.bowen@vomela.com
GEX INTERNATIONAL (847) 543-4600, mcdonaldsdecor@gxi.com
 - E EXTERIOR INSULATION FINISH SYSTEM (E.I.F.S.)
C1-COLOR: C1 = "IRON ORE" SW 7069 BY SHERWIN WILLIAMS
1-TYPE: 1 = PRE-FAB ANCHOR-TITE FASCIA
FB FILL BOX
C02 = BULK CO2 FILL BOX (EQPM SCHEDULE ITEM 49.00)
BO = BULK OIL FILL BOX (EQPM SCHEDULE ITEM 700.18)
 - FL FIBER CEMENT LAP SIDING; HARDIEPLANK LAP SIDING, BEADED SMOOTH, 8 1/4" WIDTH, 7" EXPOSURE, HZS, COLOR: STEEL - AGED PEWTER (ACM TO CONFIRM)
 - FT FIBER CEMENT TRIM: HARDIETRIM BOARDS, 4/4 SMOOTH, 1 5/8" & 3 1/2" WIDTH, 3/4" THICK, HZS, COLOR: STEEL - AGED PEWTER (CHECK 1 5/8" PRE-PAINT AVAILABILITY)
 - GR GUARD RAIL - SEE SITE PLAN FOR EXACT LOCATION AND LENGTH-SEE 4/A2.1 FOR DETAILS
PAINT: "IRON ORE" SW 7069 BY SHERWIN WILLIAMS
 - L1 RECESSED DOWN LIGHT FIXTURE - SEE ELECTRICAL
COLOR: GOLD
 - L2 RADIAL SCENCE LIGHT FIXTURE - SEE ELECTRICAL
C1-COLOR: C1 = WHITE
C2 = PLATINUM SILVER
 - LE ACCENT LIGHTING - SEE ELECTRICAL
L1-LED LIGHT:
L1 = SLM LED (DOWN ONLY)
L2 = INTEGRAL CANOPY FIXTURE
L3 = UP ONLY FLOOD FIXTURE
 - MF METAL FASCIA
C1-TYPE: 1 = PRE-FAB ANCHOR-TITE FASCIA
2 = BOTTOM TRIM AT METAL REVEAL PANEL
3 = VERTICAL TRIM AT METAL REVEAL PANEL CORNERS, CLOSURES
COLOR:
C1 = CITYSCAPE
C2 = RAL 7022
 - RO ROOF DRAIN OVERFLOW PIPE PAINT TO MATCH SURROUNDING MATERIAL
 - S McDONALD'S SIGNAGE BY OTHERS - UNDER SEPARATE PERMIT.
C1-COLOR: C1 = WEATHERED ZINC RACEWAY
C2 = RAL 7022 RACEWAY
 - ST C02 STROBE/ALARM. SEE MECHANICAL DRAWINGS FOR SPECIFICATION.
 - TL TILE (BASE OF BATTEN SYSTEM)
IRIS CERAMICA: E-WOOD COLLECTION
COLOR: R9 BLACK, SIZE: 6"X24"
WATERPROOFING SETTING MATERIAL AND GROUT: BY MAPEI
GROUT COLOR: ULTRA COLOR PLUS - 47 CHARCOAL
GROUT WIDTH: 1/8" TO 3/16"
 - UN METAL UNDERSCORE
COLOR: GOLD
 - W1 EXTERIOR WINDOW ASSEMBLY - TEMPERED GLASS
COLOR: EXTRA DARK BRONZE - SEE ASSEMBLY NOTES ON 4/A5.0 & FRAME TYPES ON SHEET A6.0
DRIVE-THRU WINDOW BY READY ACCESS
MODEL: 600 SERIES, 36" SERVICE HEIGHT WITH TRANSOM, MANUAL OPEN; ELECTRONIC RELEASE
COLOR: DEEP BRONZE
SLIDE DIRECTION: RL = RIGHT TO LEFT
LR = LEFT TO RIGHT
 - XX FIBER CEMENT PANELS/BATTEN/TILE/FIBER CEMENT SIDING

PROJECT NO.	029-0019	DATE	
SHEET NO.	A2.1	REV	
TITLE	2020 STANDARD BUILDING - BB20	DESCRIPTION	WOOD BEARING WALLS W/FIBER CEMENT SIDING & C1 WOOD ROOF TRUSS FRAMING FIBER CEMENT PANELS/BATTEN/TILE/FIBER CEMENT SIDING
DRAWN BY	HM	DATE ISSUED	6/16/2020
STD. ISSUE DATE	2019-9	REVIEWED BY	
PREPARED FOR:	McDonald's USA, LLC	DATE	6/16/2020
PREPARED BY:	URS Architects/Engineers, Inc.	PROJECT ADDRESS	EDGEWATER PARK, NJ
ARCHITECTS - ENGINEERS - PLANNERS	1265 Broad Street, Suite 201 Clifton, NJ 07013-3988 9/3.883.8590 fax 973.883.8501 http://www.urscorp.com	DESCRIPTION	