



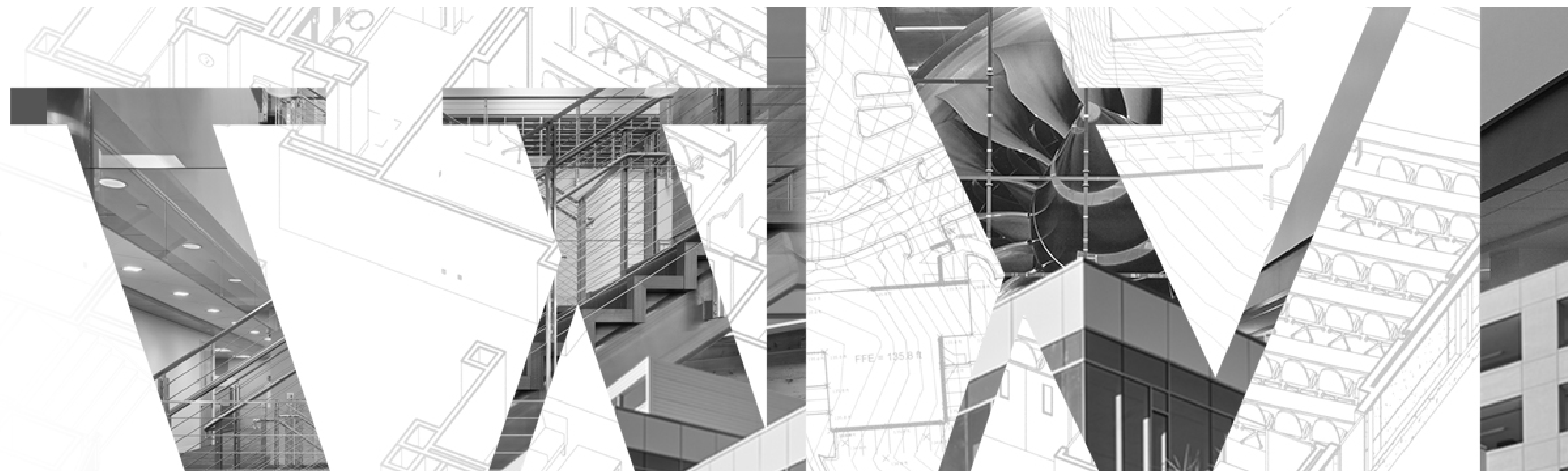
EDGEWATER SELF STORAGE

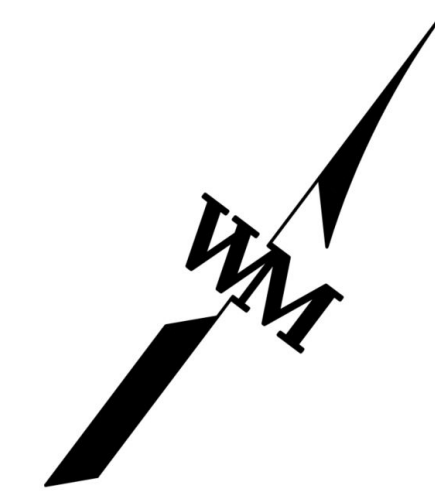
4201 ROUTE 130
EDGEWATER PARK, NEW JERSEY

PLANNING BOARD SUBMISSION SET
NYC19-0005-00
07.15.2020

WARE MALCOMB

ARCHITECTURE | PLANNING | INTERIORS
BRANDING | CIVIL ENGINEERING





BLDG A
2ND & 3RD FLOOR

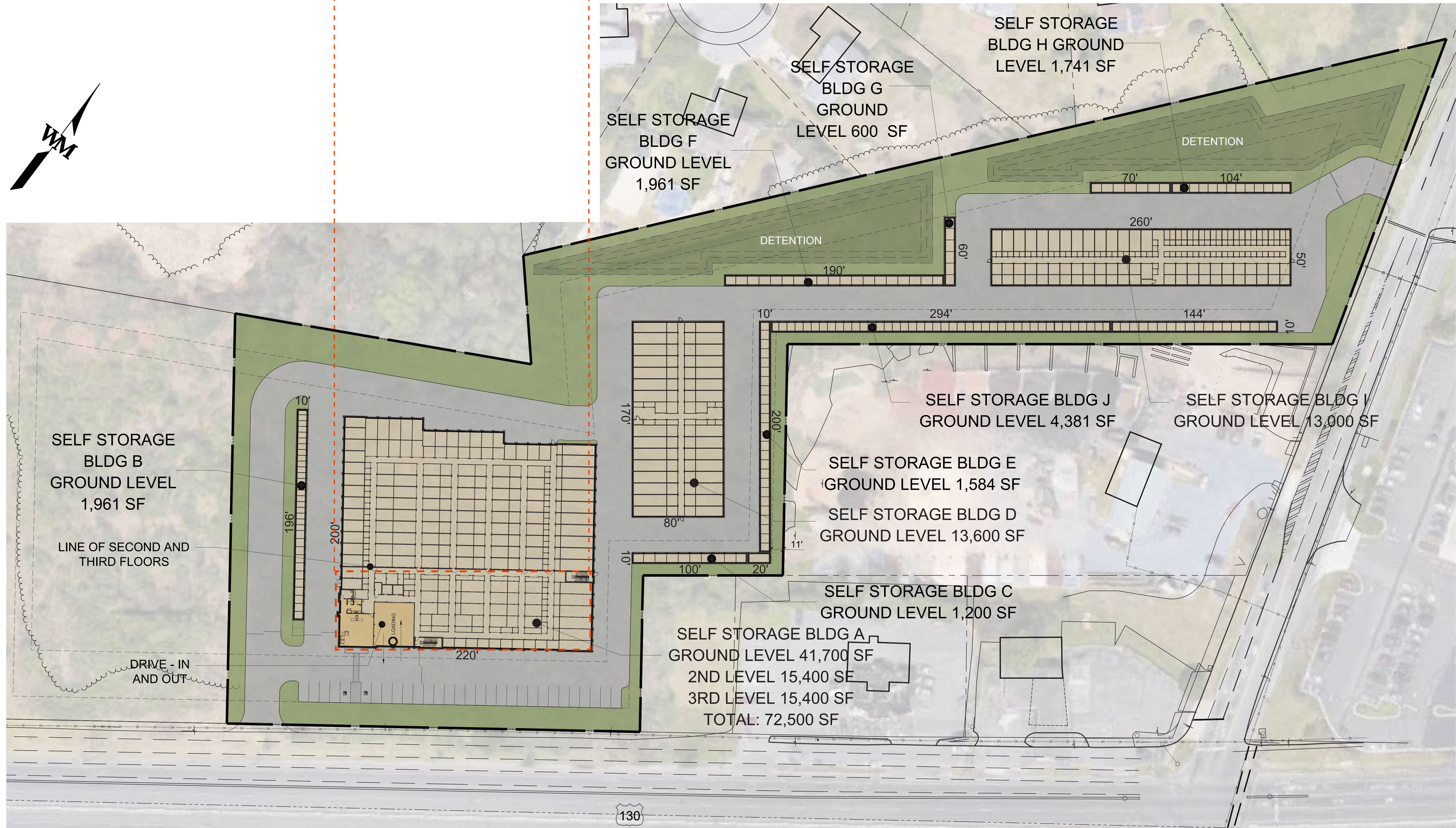
UNITS PROVIDED		
UNIT SIZE	SQ. FT.	# UNITS
5X5 CC	25	242
5X10 CC	50	69
7X10 NCC	70	45
8X10 NCC	80	56
10X10 CC	100	279
10X10 NCC	100	77
10X15 CC	150	65
10X15 NCC	150	11
10X20 CC	200	11
10X20 NCC	200	47
10X25 NCC	250	15
10X30 NCC	300	32
TOTAL		934

EFFICIENCY RATIO - BUILDING A
FIRST FLOOR
82% (Excluding office and loading area)
77% (Including office and loading area)

SECOND & THIRD FLOOR
75%

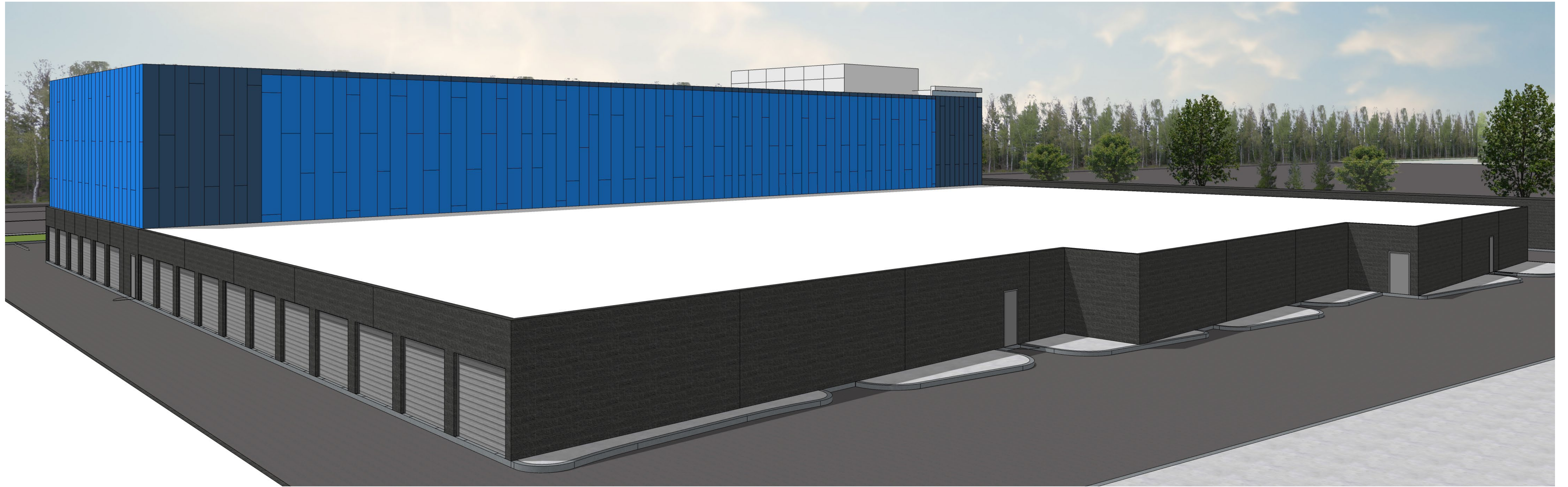
CLIMATE CONTROL VS NON-CLIMATE CONTROL RATIO

66% CLIMATE CONTROLLED UNITS (CC)
34% NON-CLIMATE CONTROLLED UNITS (NCC)

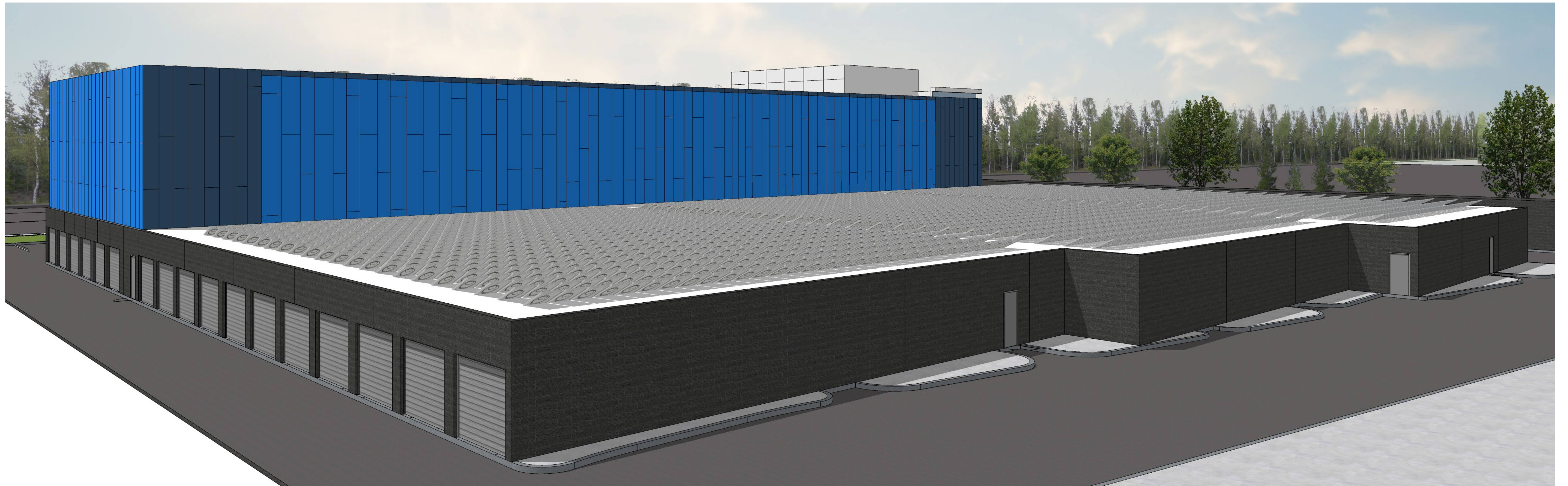




NOTE:
BUILDING SIGNAGE, 'TENANT STORAGE', MAX AREA : 40SF



PERSPECTIVE FROM ADJACENT LOTS WITHOUT SOLAR PANELS



PERSPECTIVE FROM ADJACENT LOTS WITH SOLAR PANELS



Building A – First Floor

- 53 – 5x5 CC
- 32 – 5x10 CC
- 2 – 5x15 CC
- 5 – 5x15 NCC
- 46 – 10x10 CC
- 10 – 10x10 NCC
- 5 – 10x15 CC
- 11 – 10x15 NCC
- 9 – 10x20 CC
- 33 – 10x20 NCC
- 17 – 10x30 NCC
- Total - 223

Building A – Second Floor

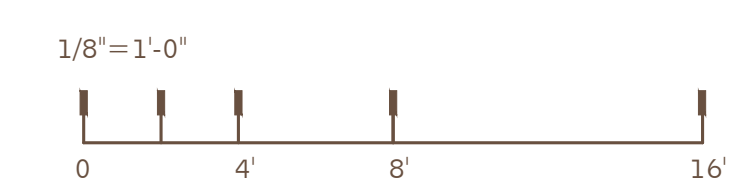
- 55 – 5x5 CC
- 4 – 5x10 CC
- 1 – 5x15 CC
- 87 – 10x10 CC
- 1 – 10x15 CC
- 1 – 10x20 CC
- Total – 149

Building A – Third Floor

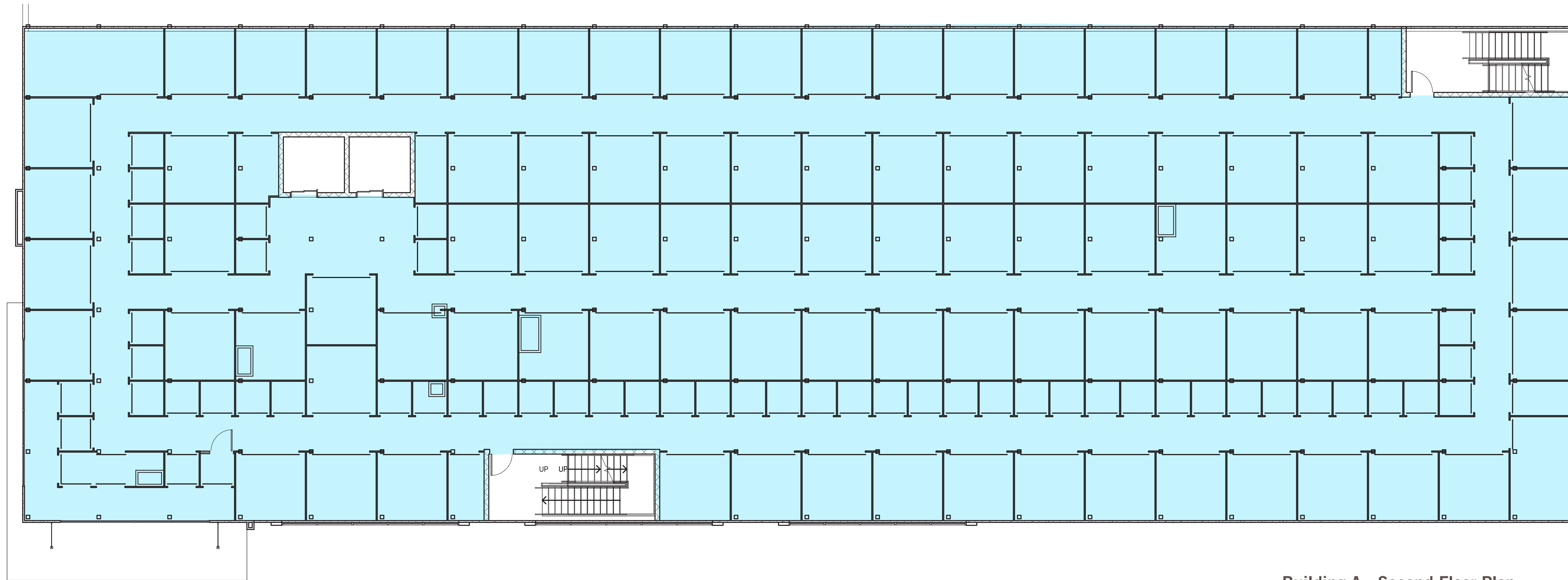
- 55 – 5x5 CC
- 4 – 5x10 CC
- 1 – 5x15 CC
- 87 – 10x10 CC
- 1 – 10x15 CC
- 1 – 10x20 CC
- Total – 149

Building A Total - 521

Climate Controlled
 NonClimate Controlled



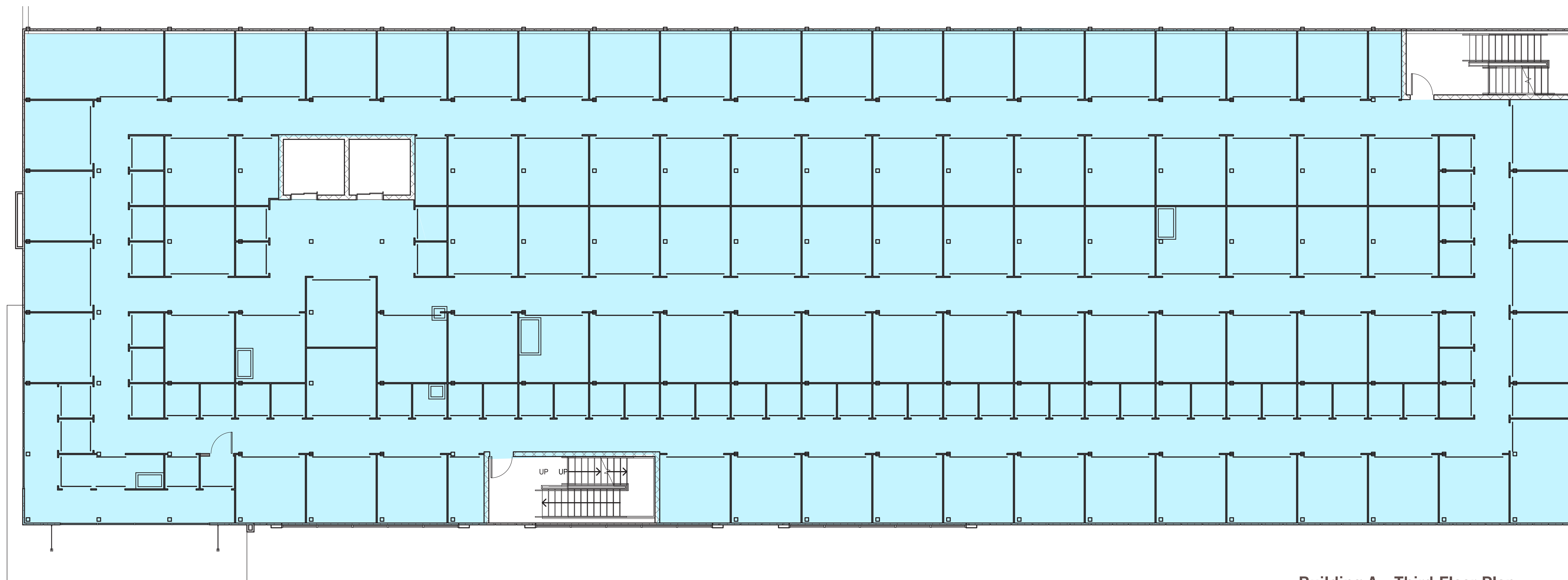
Building A - First Floor Plan



Building A - Second Floor Plan

Building A – Second Floor

- 55 – 5x5 CC
- 4 – 5x10 CC
- 1 – 5x15 CC
- 87 – 10x10 CC
- 1 – 10x15 CC
- 1 – 10x20 CC
- Total – 149

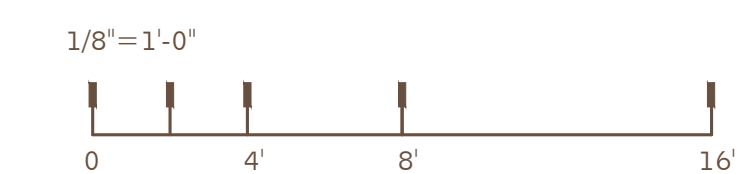


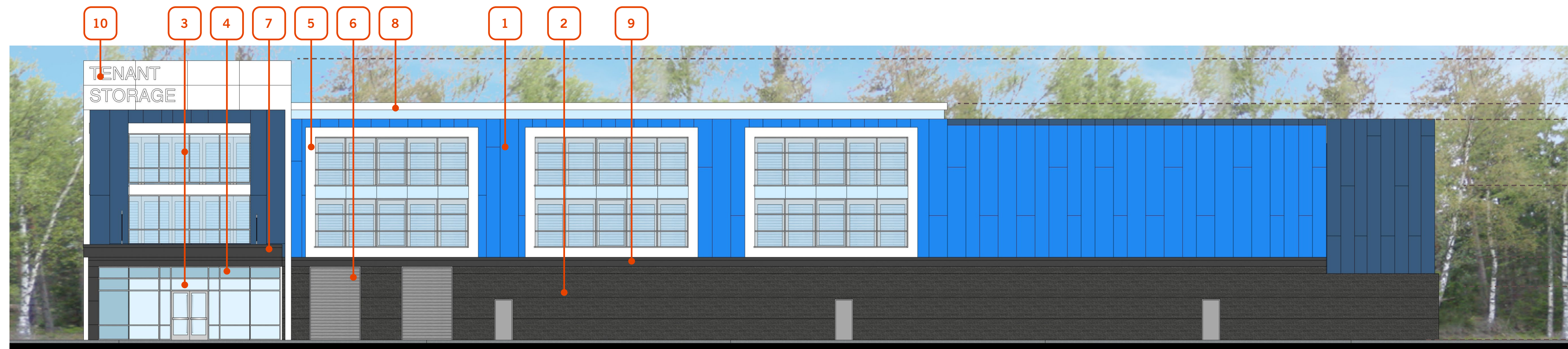
Building A - Third Floor Plan

Building A – Third Floor

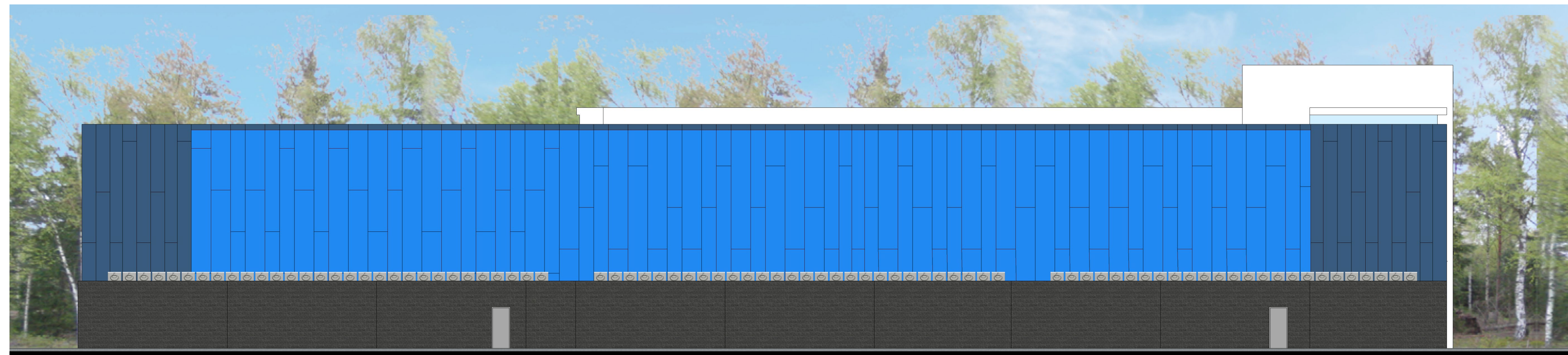
- 55 – 5x5 CC
- 4 – 5x10 CC
- 1 – 5x15 CC
- 87 – 10x10 CC
- 1 – 10x15 CC
- 1 – 10x20 CC
- Total – 149

Climate Controlled
 NonClimate Controlled





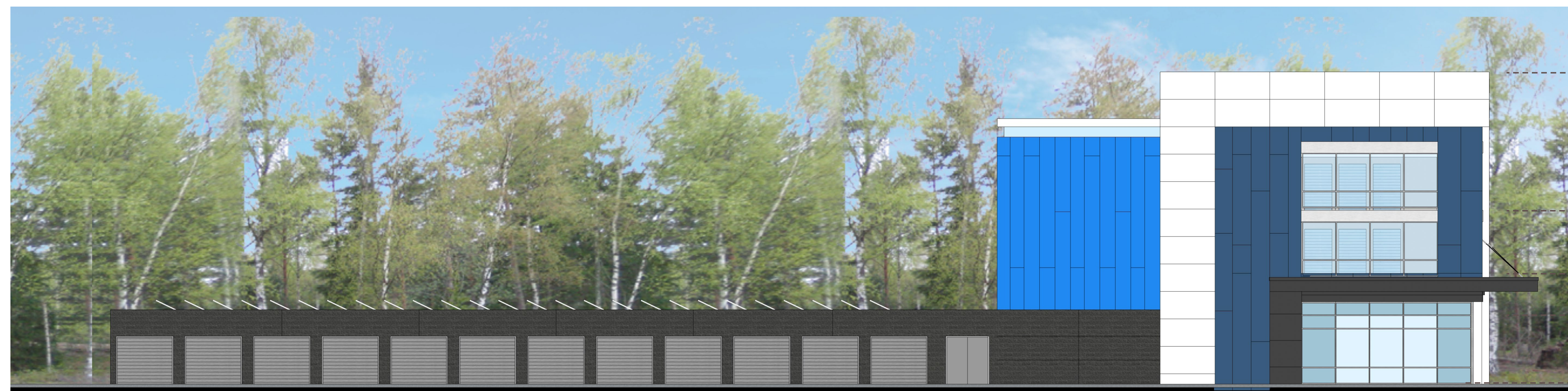
SOUTH ELEVATION



NORTH ELEVATION



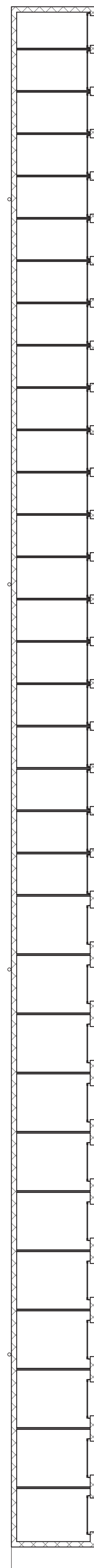
EAST ELEVATION



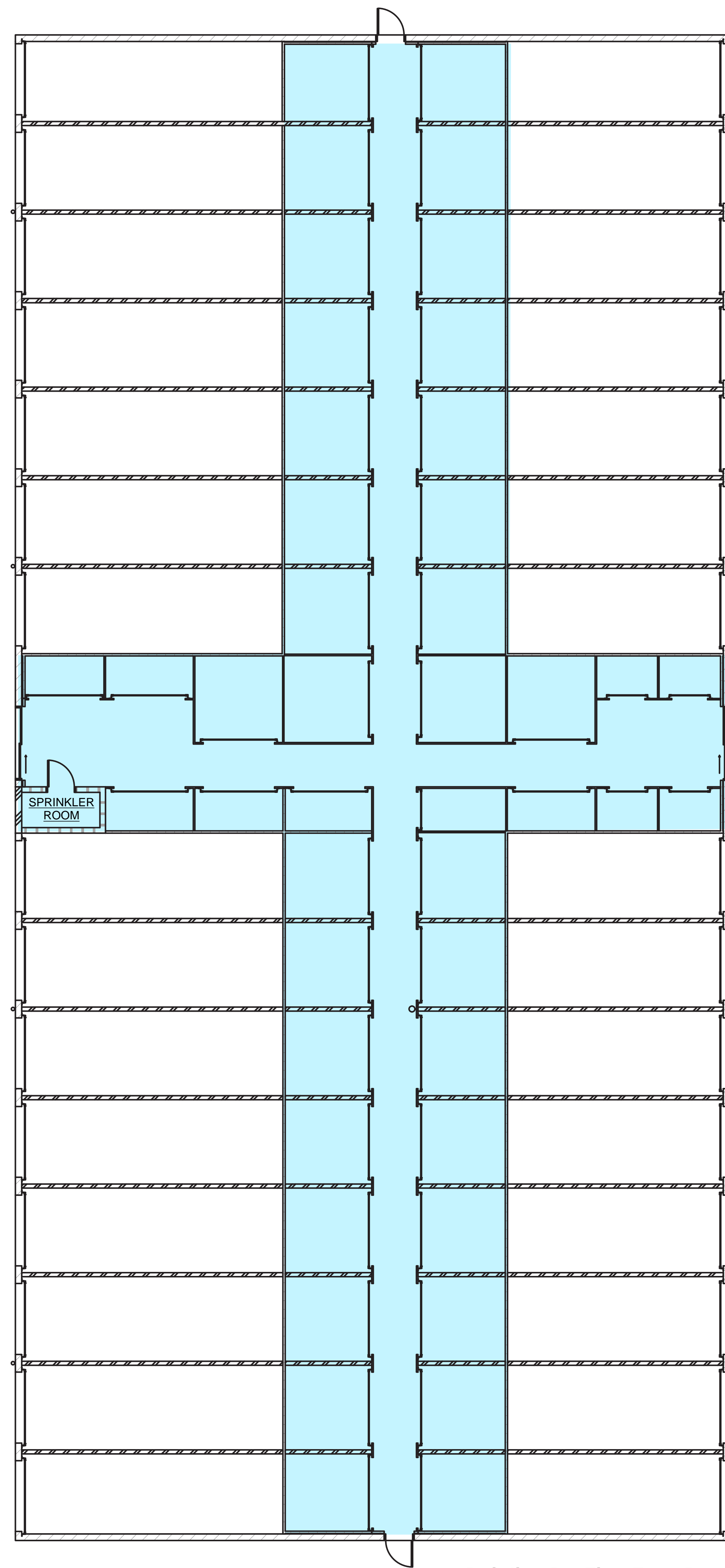
WEST ELEVATION

KEYNOTES

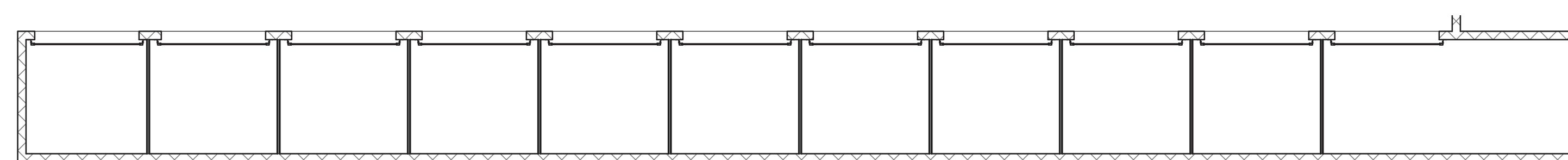
- 1 INSULATED METAL PANEL
- 2 INTEGRALLY COLORED OMNIBLOCK, 8" & 12" WITH EITHER SPLIT FACE OR GROUND FACE FINISH, WITH SEALER.
- 3 INSULATED STOREFRONT GLAZING IN THERMALLY BROKEN ALUMINUM FRAME CLEAR ANODIZED FRAME W/ SOLARBAN VISSION GLASS
- 4 DUAL PANE SPANDREL GLASS W/ OPACITY COATING ON 4TH SURFACE SW 7006 "EXTRA WHITE"
- 5 ALUMINUM ACCENT ELEMENT W/ FAUX PRINT OF STORAGE DOORS AND INSULATED GLAZING SYSTEM PREFINISHED
- 6 INSULATED SECTIONAL OVERHEAD DRIVE-IN (GRADE LEVEL) DOOR PREFINISHED
- 7 COMPOSITE METAL PANEL CLAD CANOPY ELEMENT PRE-FINISHED
- 8 BREAK METAL SOFFIT W/ LED INSET LIGHT PRE-FINISHED
- 9 PRECAST MASONRY LEDGE TRIM INTEGRALLY COLORED
- 10 TENANT SIGNAGE ON STAND-OFFS BUILDING SIGNAGE MAX AREA : 40SF



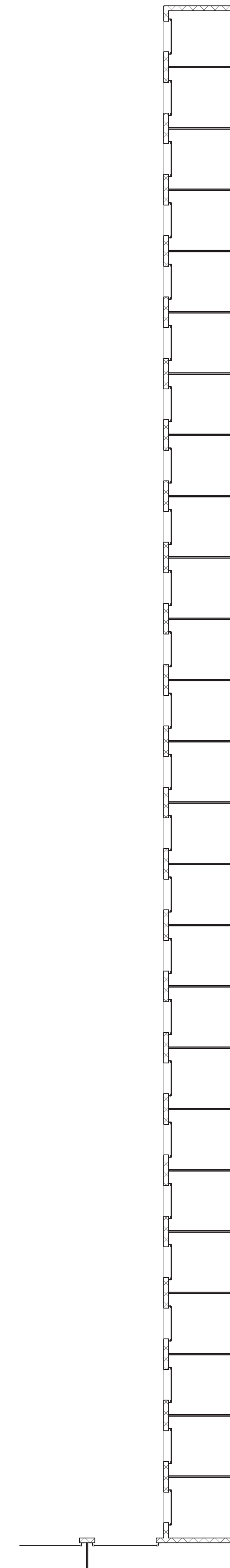
Building B - First Floor Plan



Building D - First Floor Plan



Building C - First Floor Plan




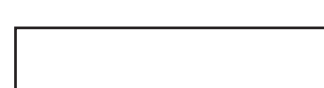
Building E - First Floor Plan

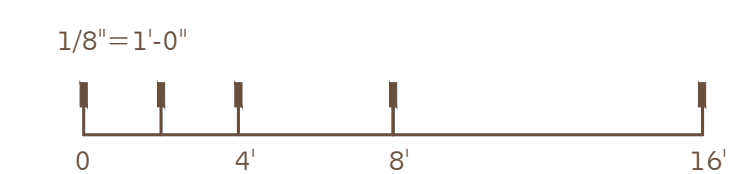
Building B
 121 – 5x10 NCC
 3 – 7x10 NCC
 Total – 34

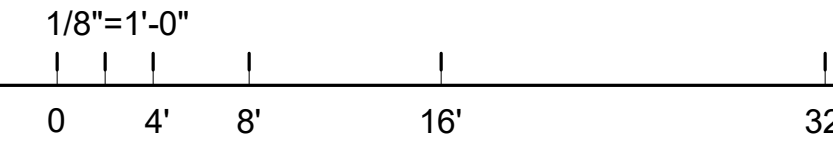
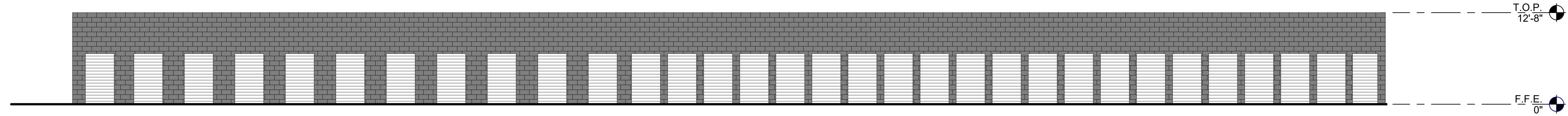
Building C
 10 – 10x10 NCC
 1 – 10x20 NCC
 Total - 11

Building D
 4 – 5x5 CC
 7 – 5x10 CC
 34 – 10x10 CC
 15 – 10x25 NCC
 15 – 10x30 NCC
 Total - 76

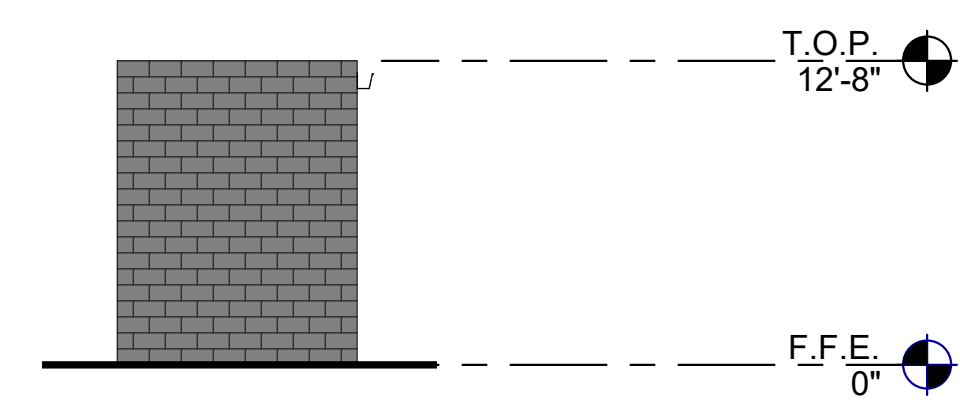
Building E
 25 – 8x10 NCC
 Total - 25

 Climate Controlled
 NonClimate Controlled

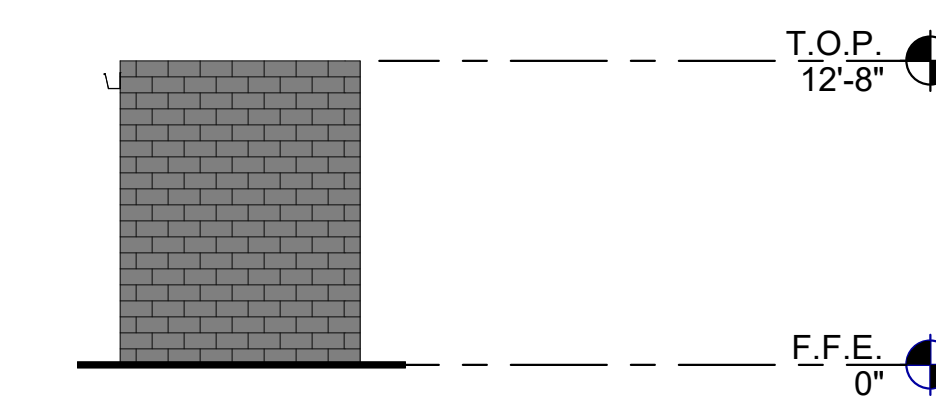




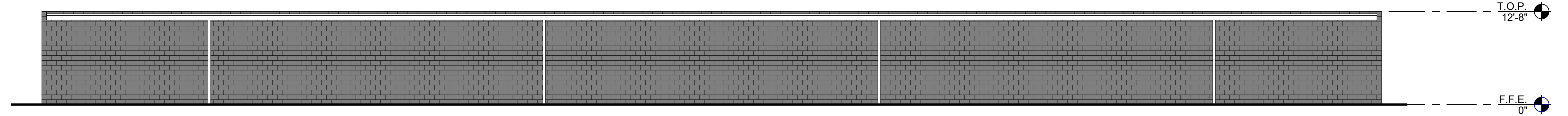
BUILDING B - EAST EXTERIOR ELEVATION ①
SCALE: 1/8" = 1'-0"



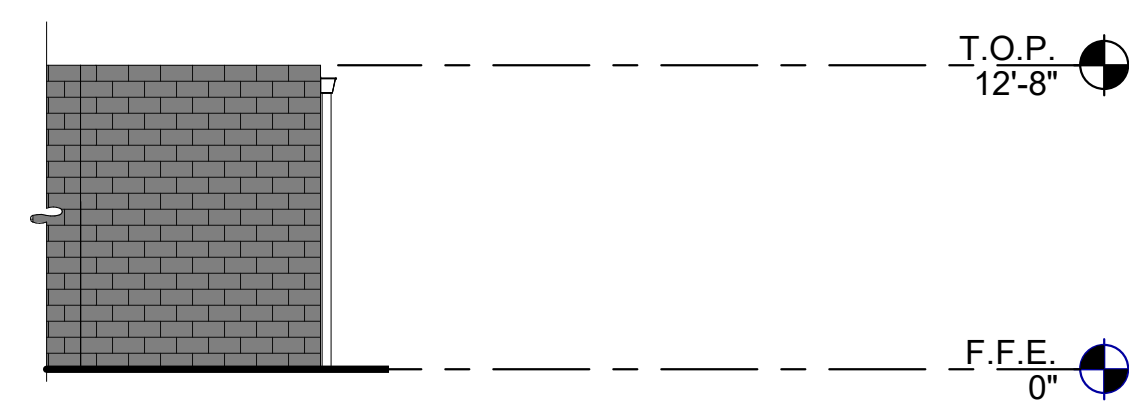
BUILDING B - NORTH EXTERIOR ELEVATION ④
SCALE: 1/8" = 1'-0"



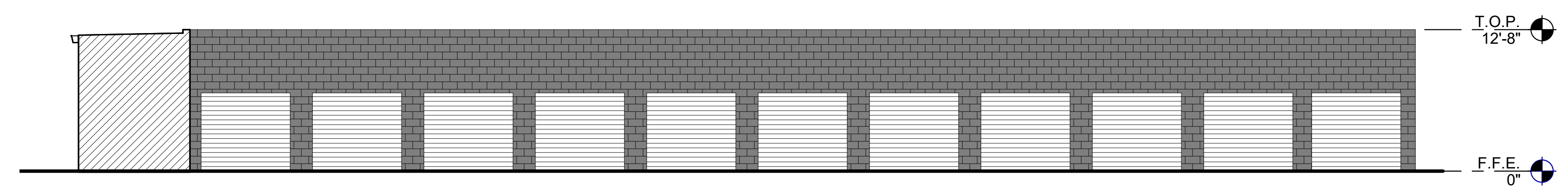
BUILDING B - SOUTH EXTERIOR ELEVATION ②
SCALE: 1/8" = 1'-0"



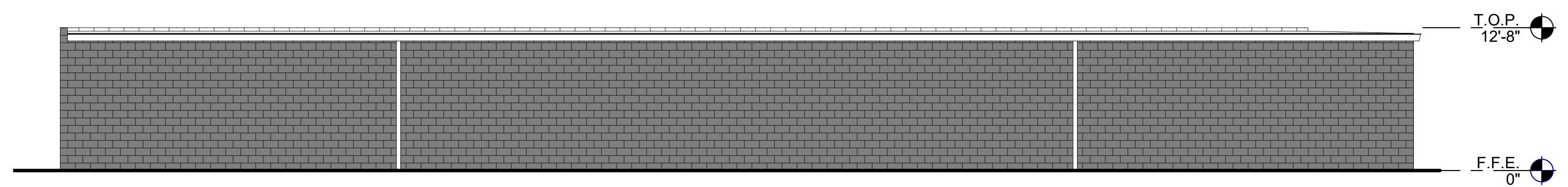
BUILDING B - WEST EXTERIOR ELEVATION ③
SCALE: 1/8" = 1'-0"



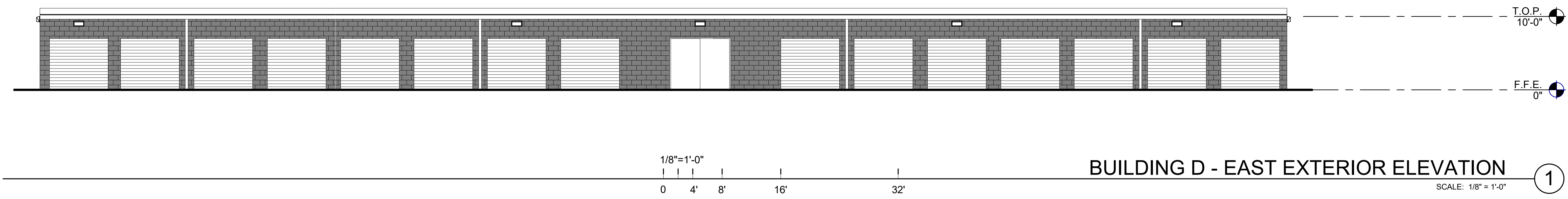
BUILDING C - WEST EXTERIOR ELEVATION ⑥
SCALE: 1/8" = 1'-0"



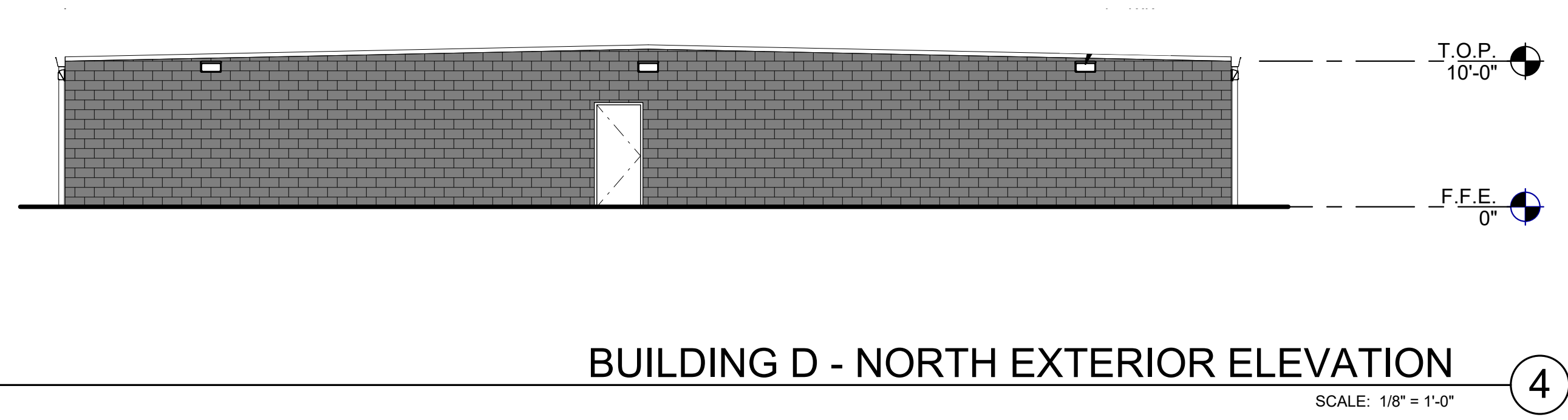
BUILDING C - NORTH EXTERIOR ELEVATION ④
SCALE: 1/8" = 1'-0"



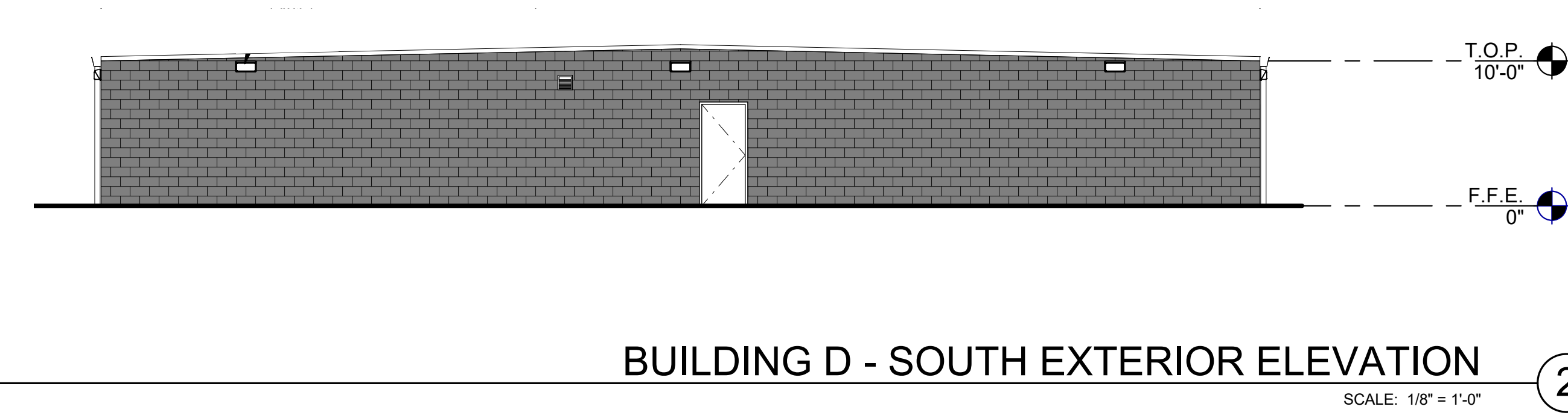
BUILDING C - SOUTH EXTERIOR ELEVATION ⑤
SCALE: 1/8" = 1'-0"



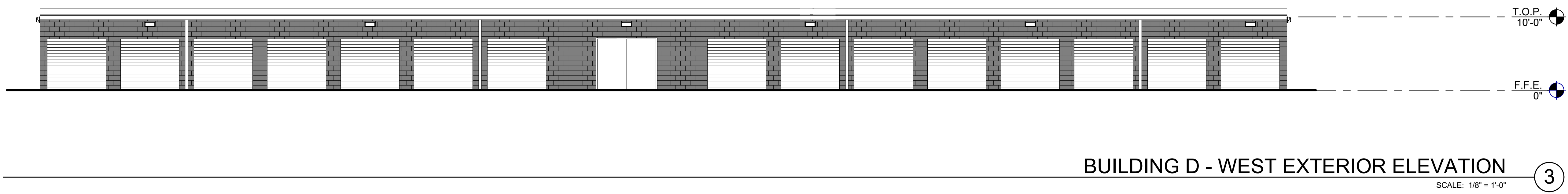
BUILDING D - EAST EXTERIOR ELEVATION ①
SCALE: 1/8" = 1'-0"



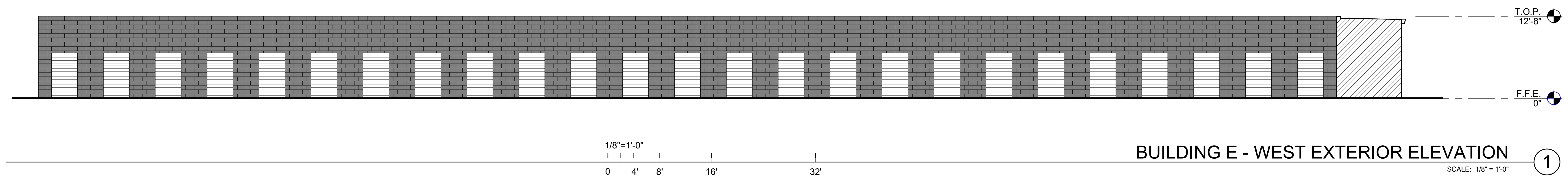
BUILDING D - NORTH EXTERIOR ELEVATION ④
SCALE: 1/8" = 1'-0"



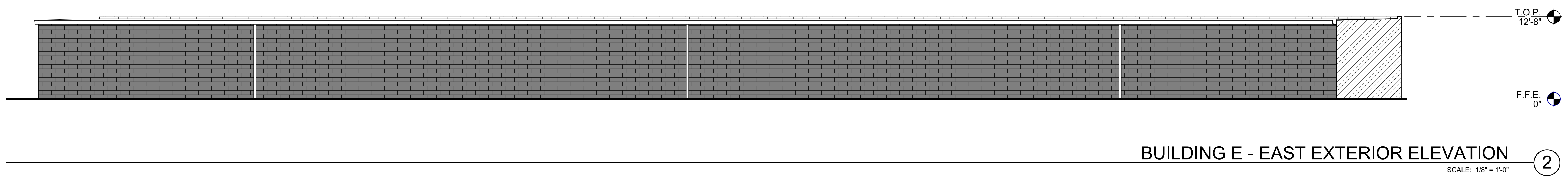
BUILDING D - SOUTH EXTERIOR ELEVATION ②
SCALE: 1/8" = 1'-0"



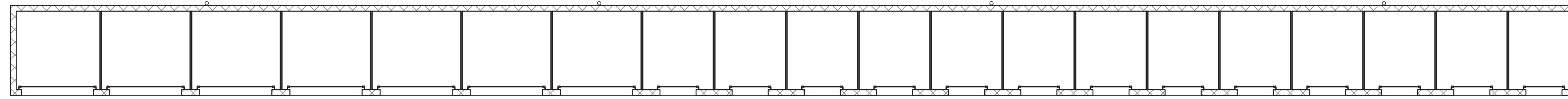
BUILDING D - WEST EXTERIOR ELEVATION ③
SCALE: 1/8" = 1'-0"



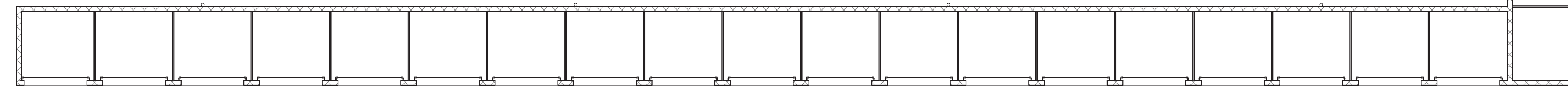
BUILDING E - WEST EXTERIOR ELEVATION ①
SCALE: 1/8" = 1'-0"



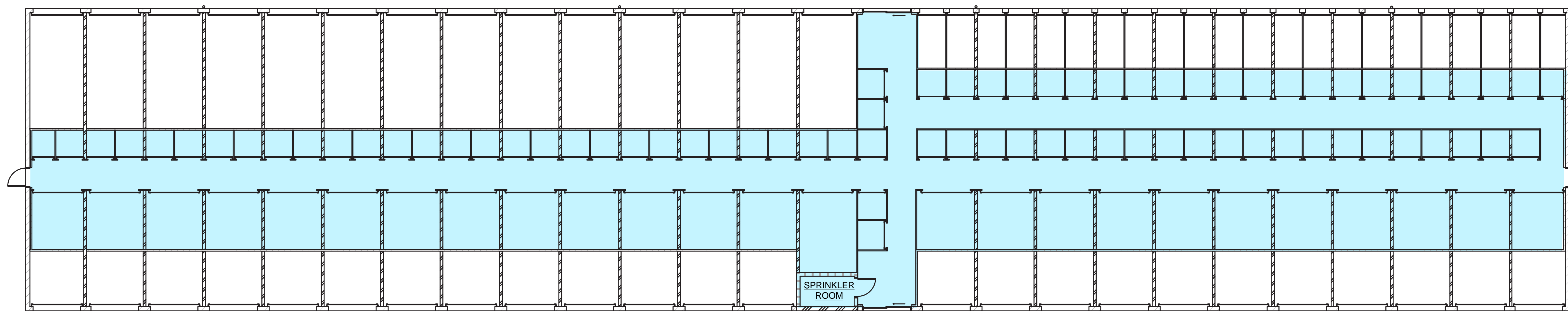
BUILDING E - EAST EXTERIOR ELEVATION ②
SCALE: 1/8" = 1'-0"



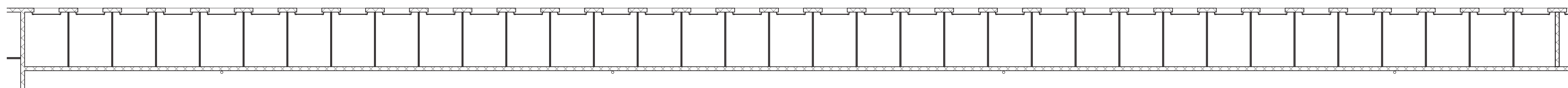
Building H - First Floor Plan



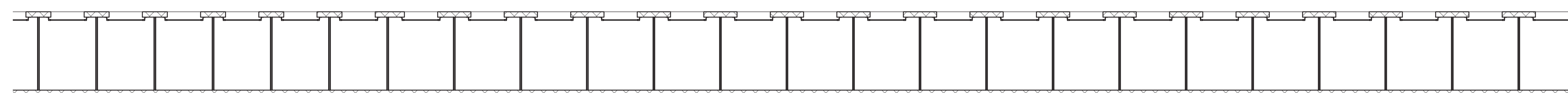
Building F & G - First Floor Plan



Building I - First Floor Plan



Building J - First Floor Plan



Building J (Cont.)- First Floor Plan


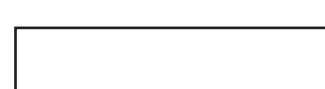
Building F
19 – 10x10 NCC
Total - 19

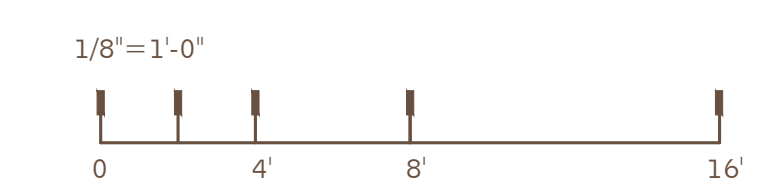
Building G
6 – 10x10 NCC
Total - 6

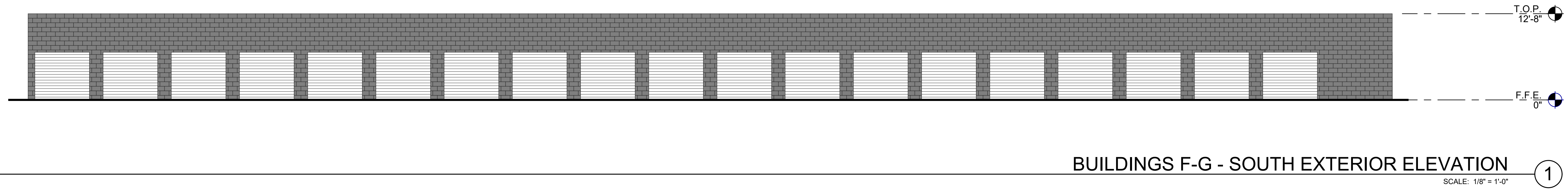
Building H
13 – 8x10 NCC
7 – 10x10 NCC
Total - 20

Building I
76 – 5x5 CC
22 – 5x10 NCC
25 – 10x10 CC
25 – 10x10 NCC
14 – 10x20 NCC
Total - 162

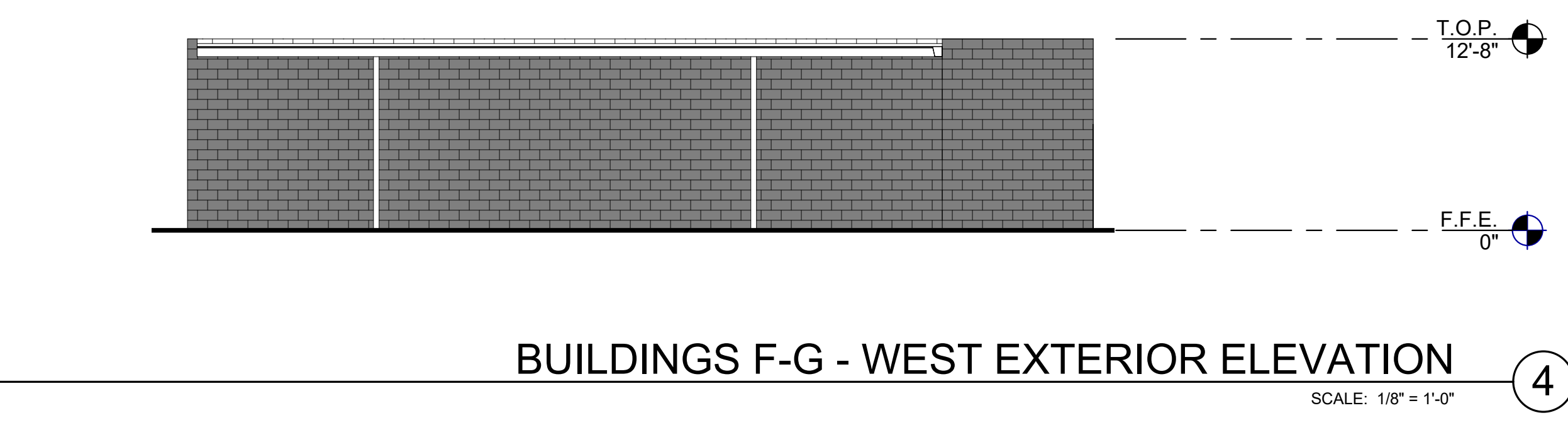
Building J
42 – 7x10 NCC
18 – 8x10 NCC
Total – 60

 Climate Controlled
 NonClimate Controlled

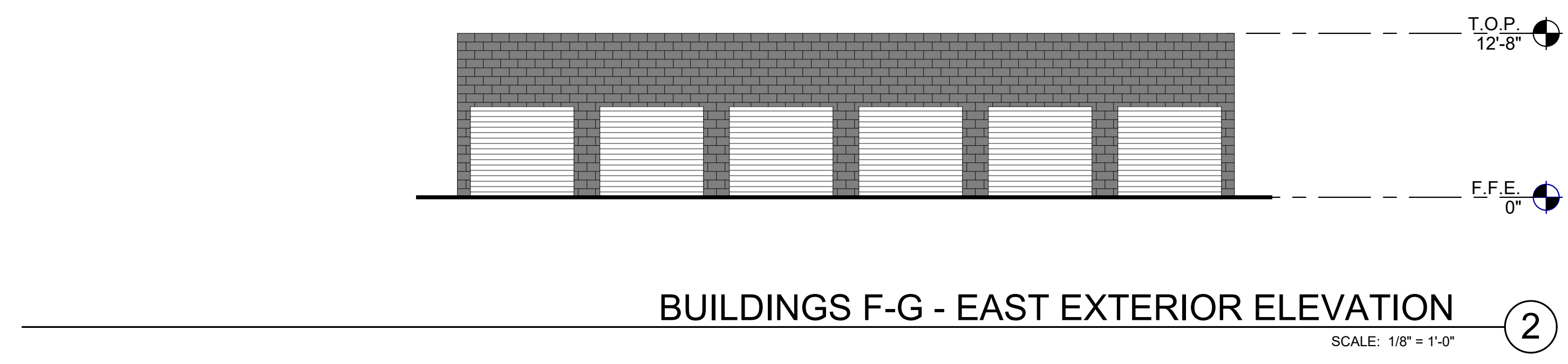




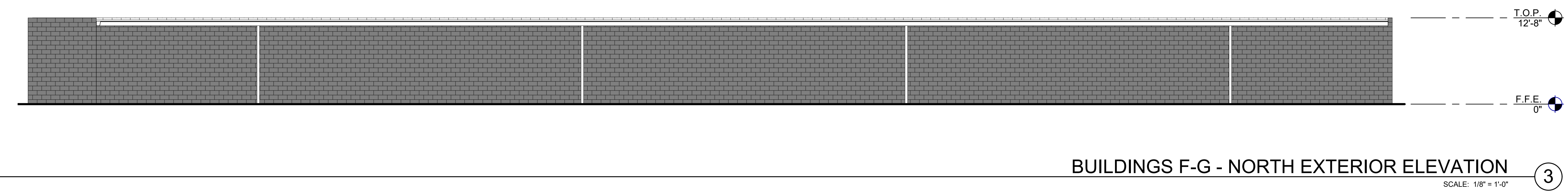
BUILDINGS F-G - SOUTH EXTERIOR ELEVATION
SCALE: 1/8" = 1'-0"



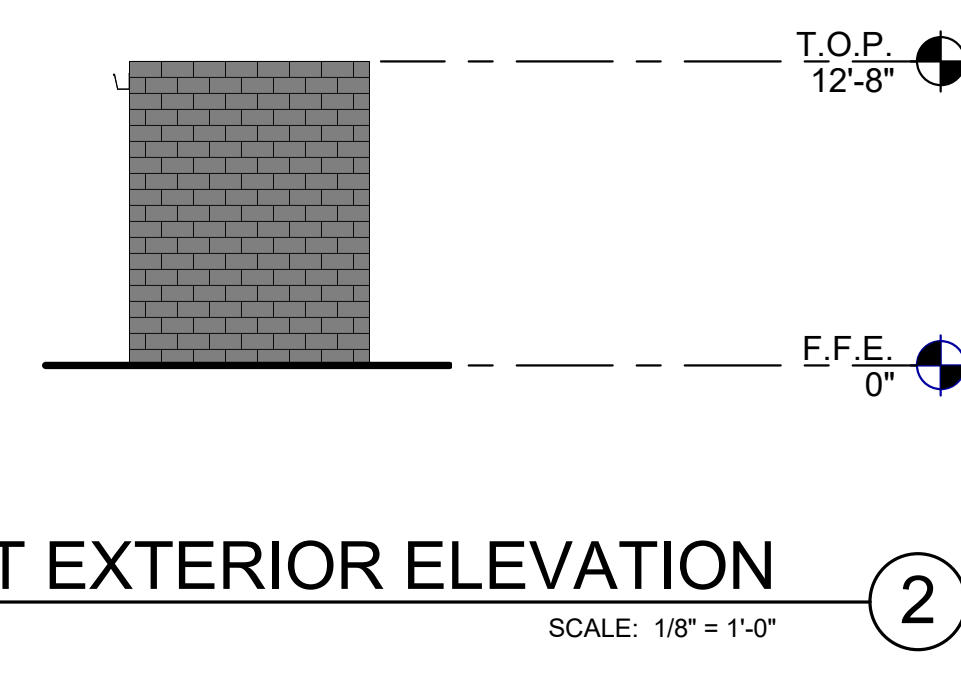
BUILDINGS F-G - WEST EXTERIOR ELEVATION
SCALE: 1/8" = 1'-0"



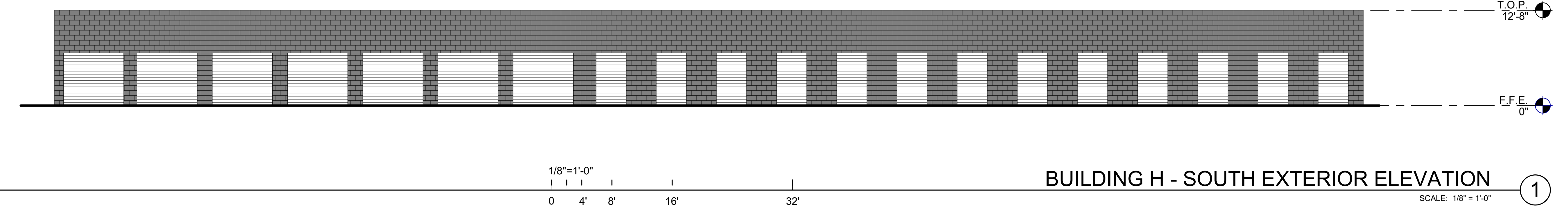
BUILDINGS F-G - EAST EXTERIOR ELEVATION
SCALE: 1/8" = 1'-0"



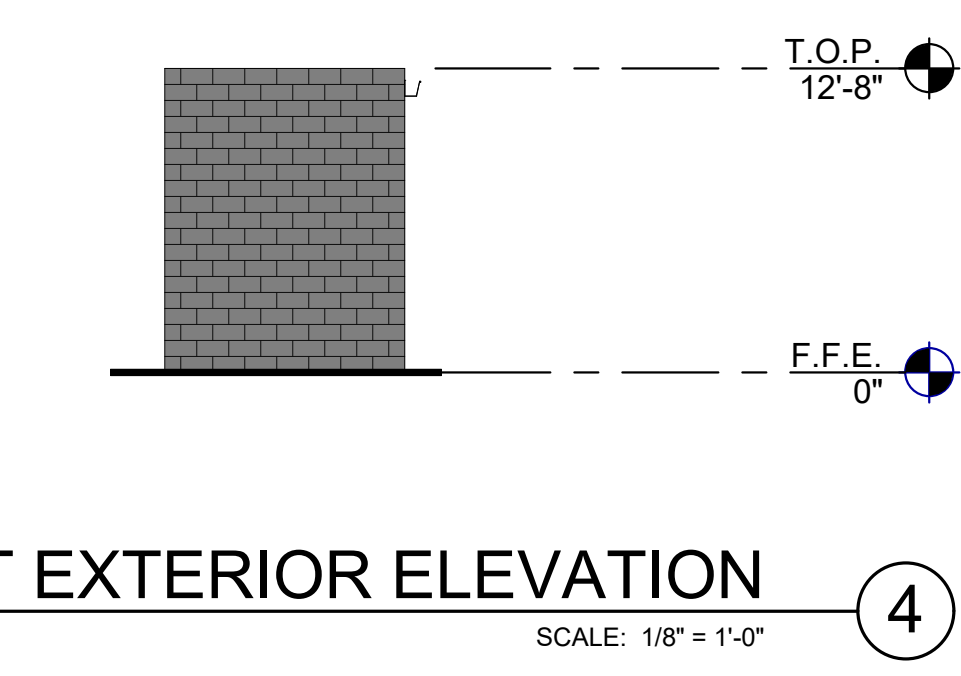
BUILDINGS F-G - NORTH EXTERIOR ELEVATION
SCALE: 1/8" = 1'-0"



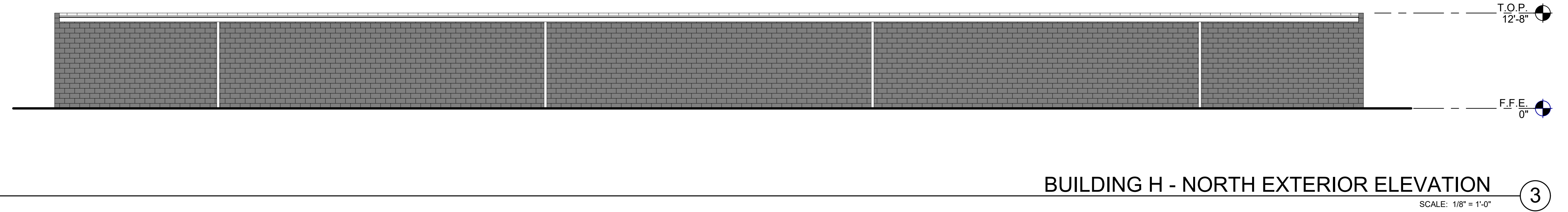
BUILDING H - WEST EXTERIOR ELEVATION
SCALE: 1/8" = 1'-0"



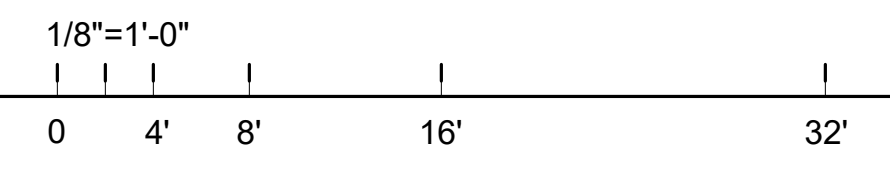
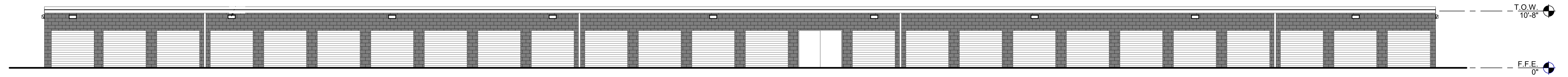
BUILDING H - SOUTH EXTERIOR ELEVATION
SCALE: 1/8" = 1'-0"



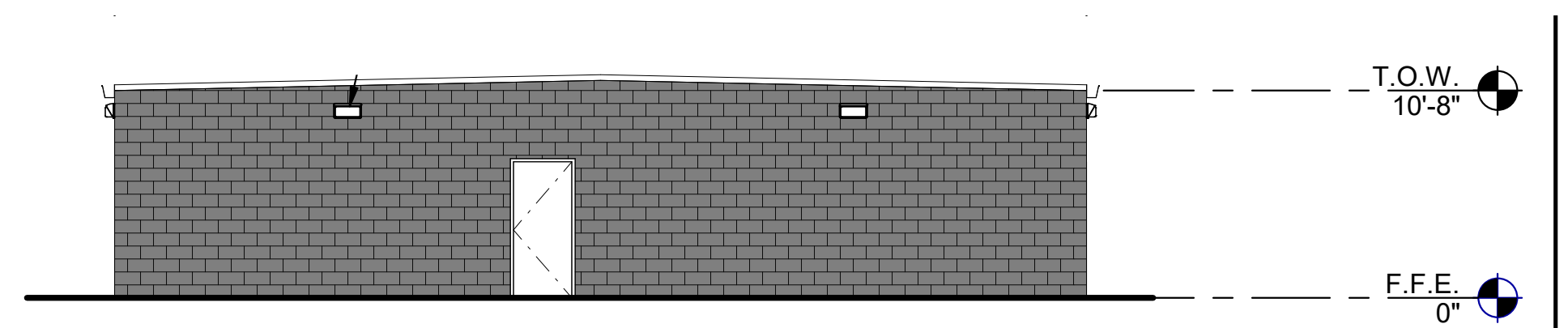
BUILDING H - EAST EXTERIOR ELEVATION
SCALE: 1/8" = 1'-0"



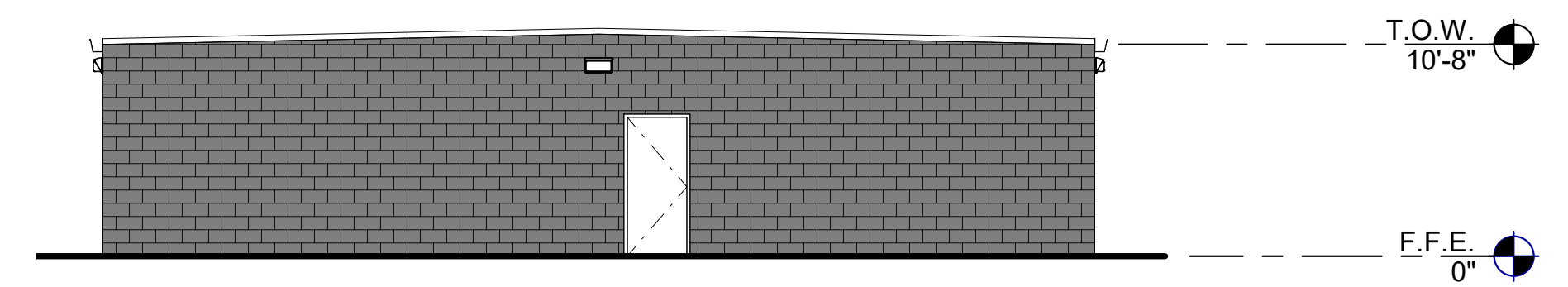
BUILDING H - NORTH EXTERIOR ELEVATION
SCALE: 1/8" = 1'-0"



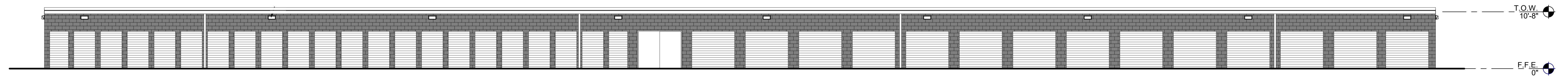
BUILDING I - SOUTH EXTERIOR ELEVATION ①
SCALE: 1/8" = 1'-0"



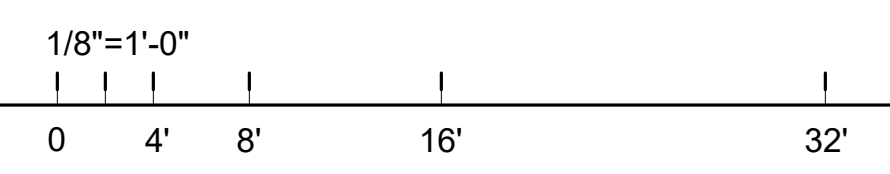
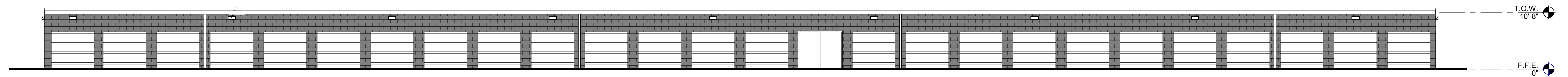
BUILDING I - EAST EXTERIOR ELEVATION ④
SCALE: 1/8" = 1'-0"



BUILDING I - WEST EXTERIOR ELEVATION ②
SCALE: 1/8" = 1'-0"



BUILDING I - NORTH EXTERIOR ELEVATION ③
SCALE: 1/8" = 1'-0"



BUILDING I - SOUTH EXTERIOR ELEVATION ①
SCALE: 1/8" = 1'-0"

